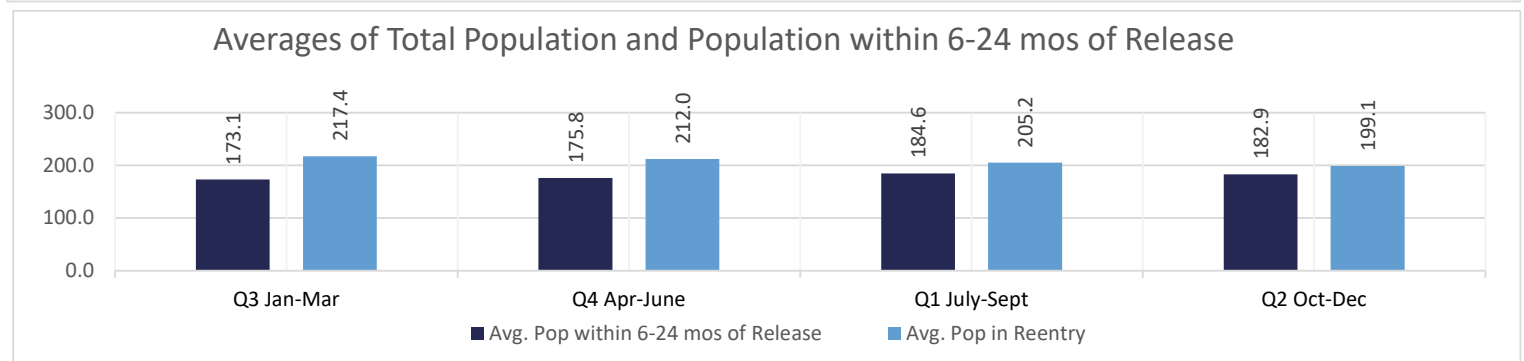
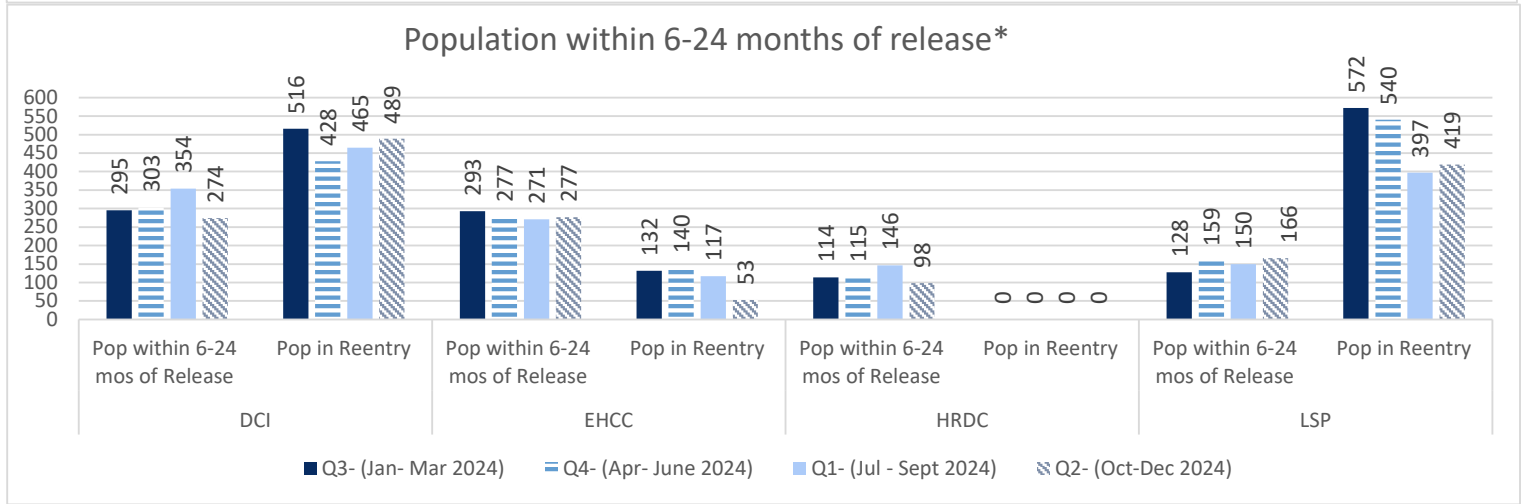
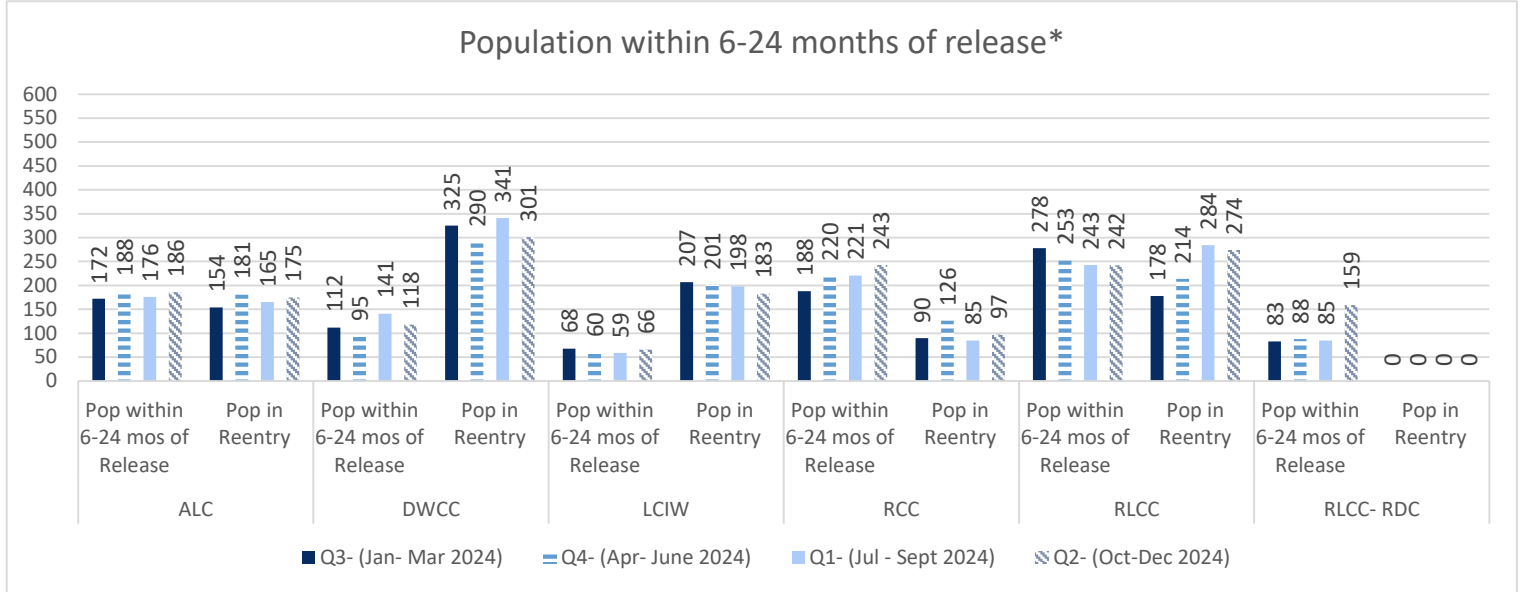


Reentry Services

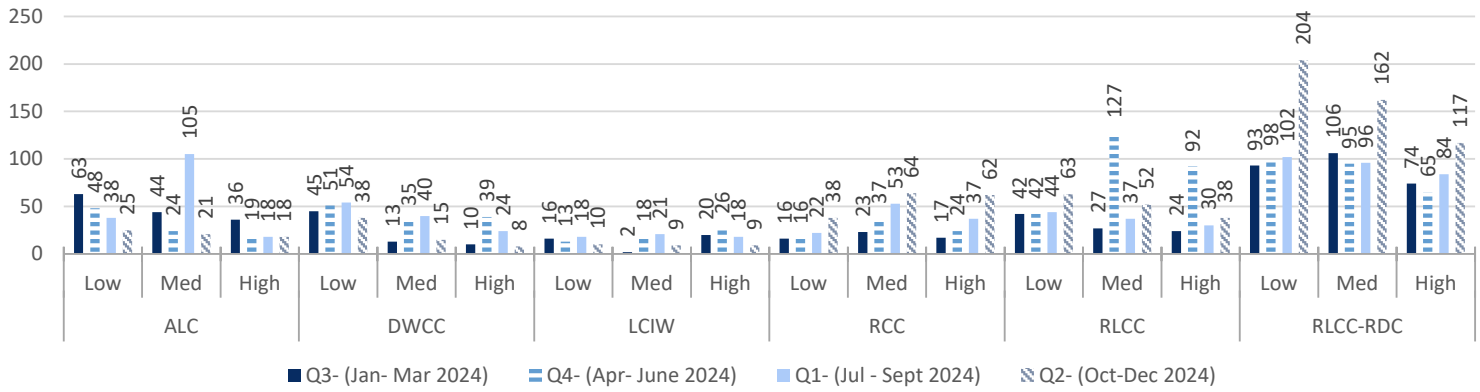
October 2024 - December 2024

REAP I

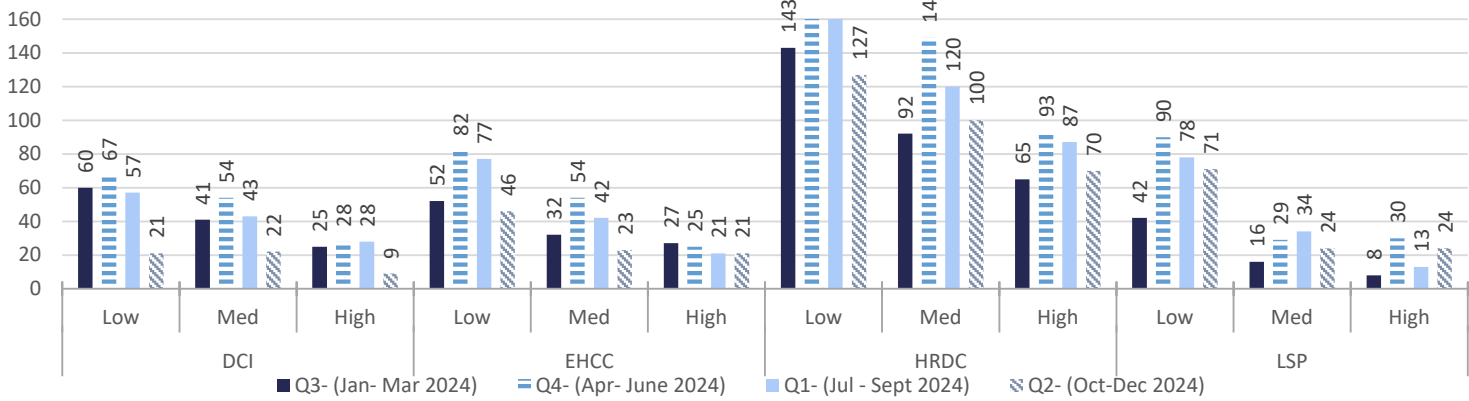


*Does not include local level inmates

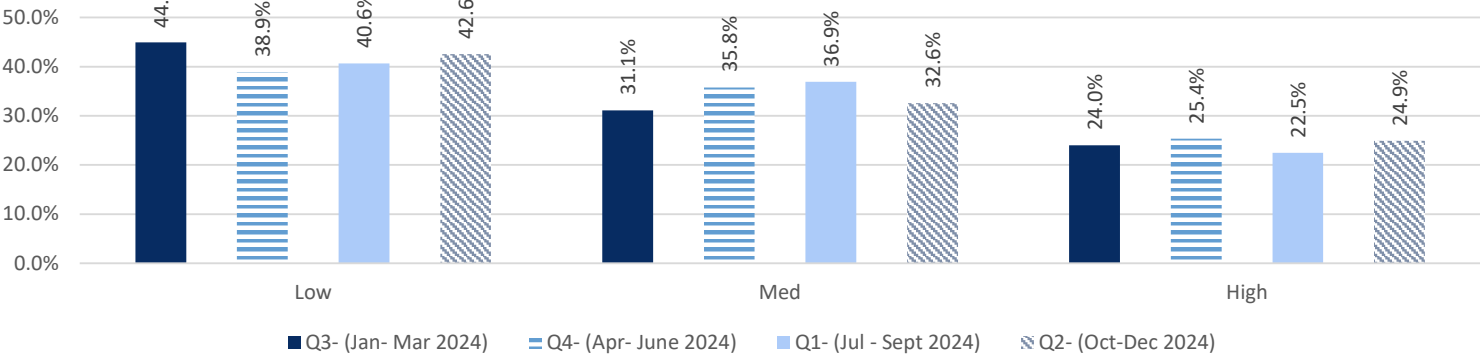
Intakes by Overall Risk



Intakes by Overall Risk



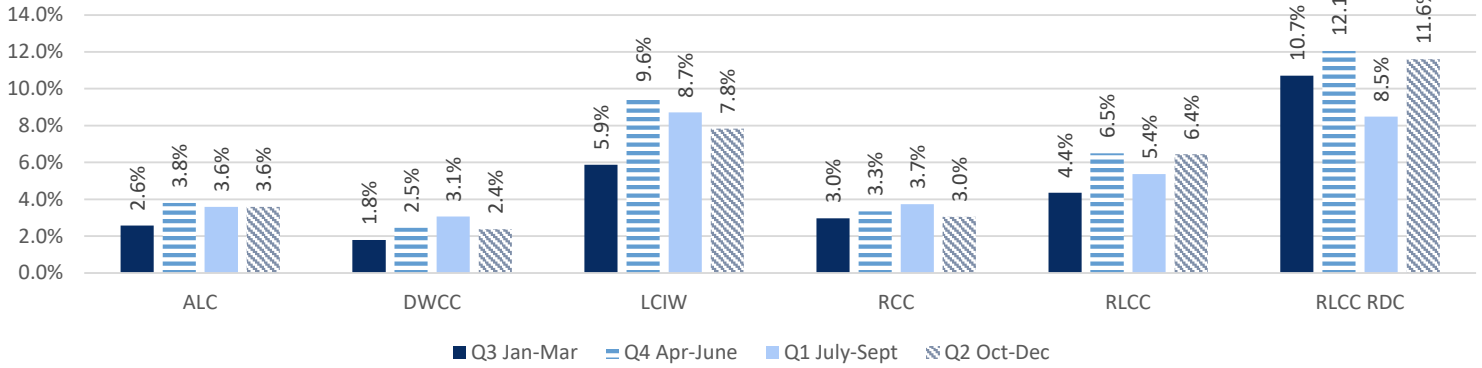
Total Intakes by Risk by Quarter



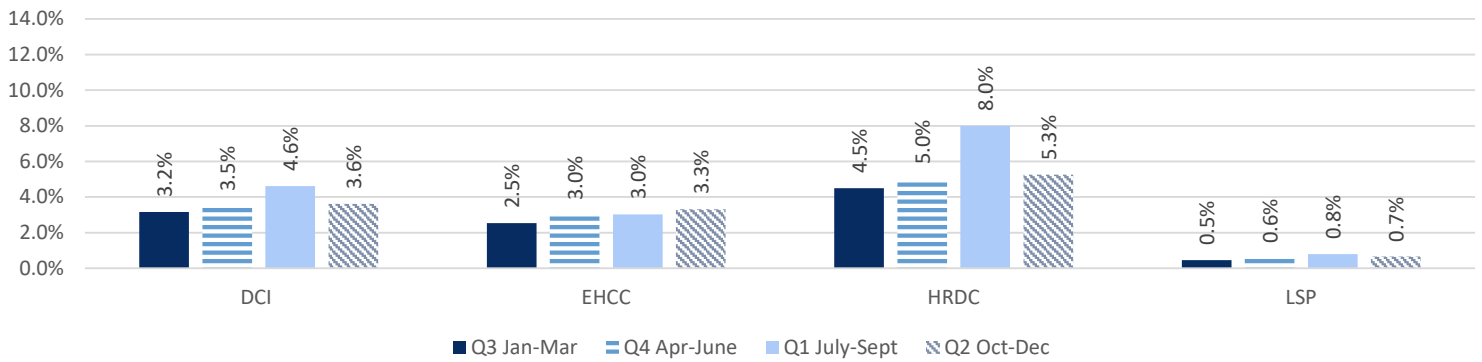
*Does not include local level offenders

REAP II

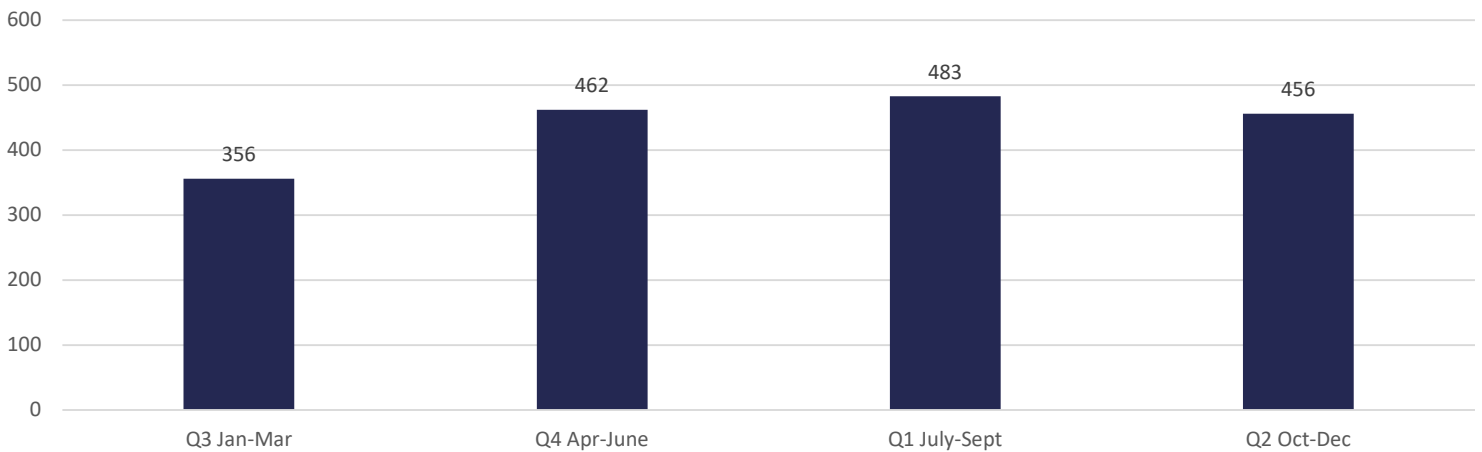
Releases from State Prisons per Quarter
By Operational Capacity



Releases from State Prisons per Quarter
By Operational Capacity

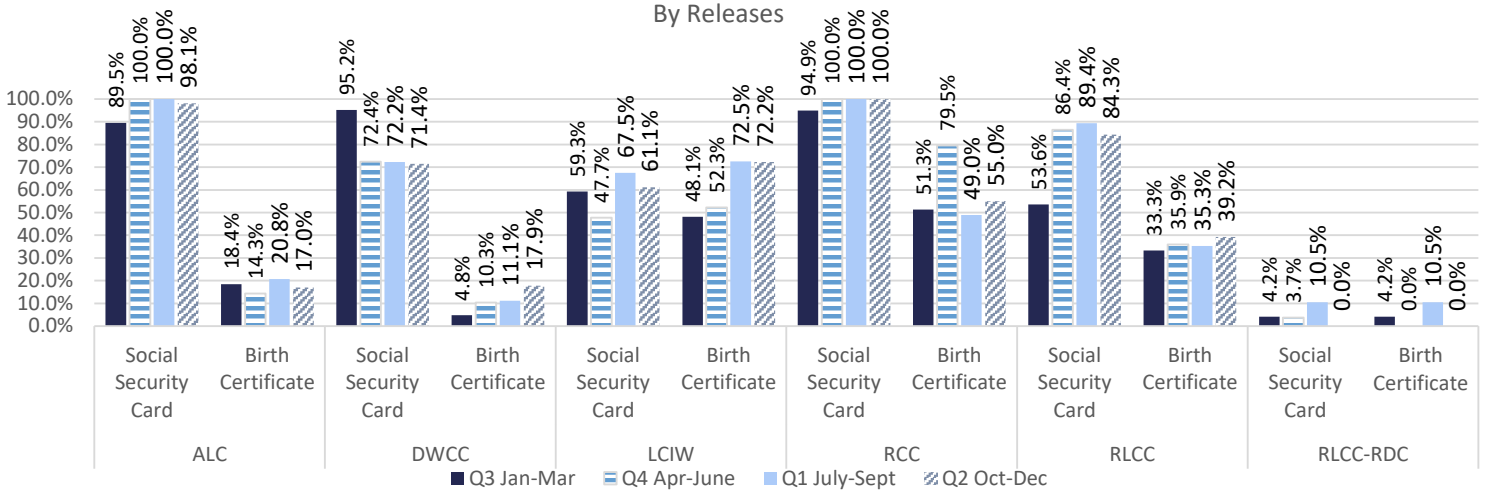


Total Releases from State Prisons per Quarter



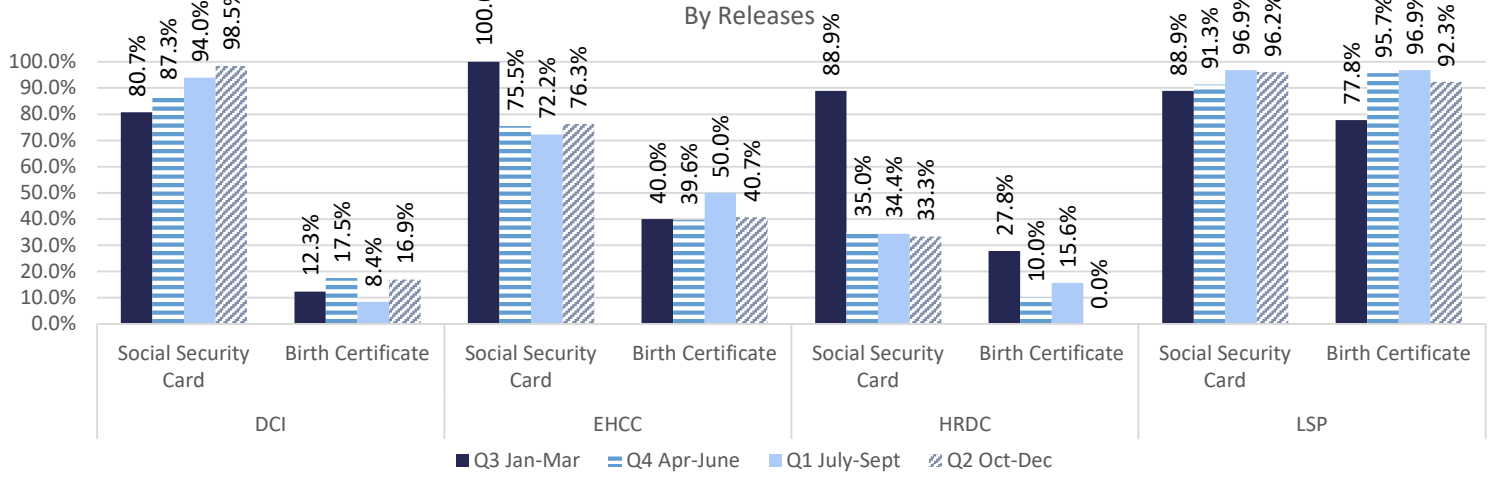
Released With Social Security Card or Birth Certificate

By Releases

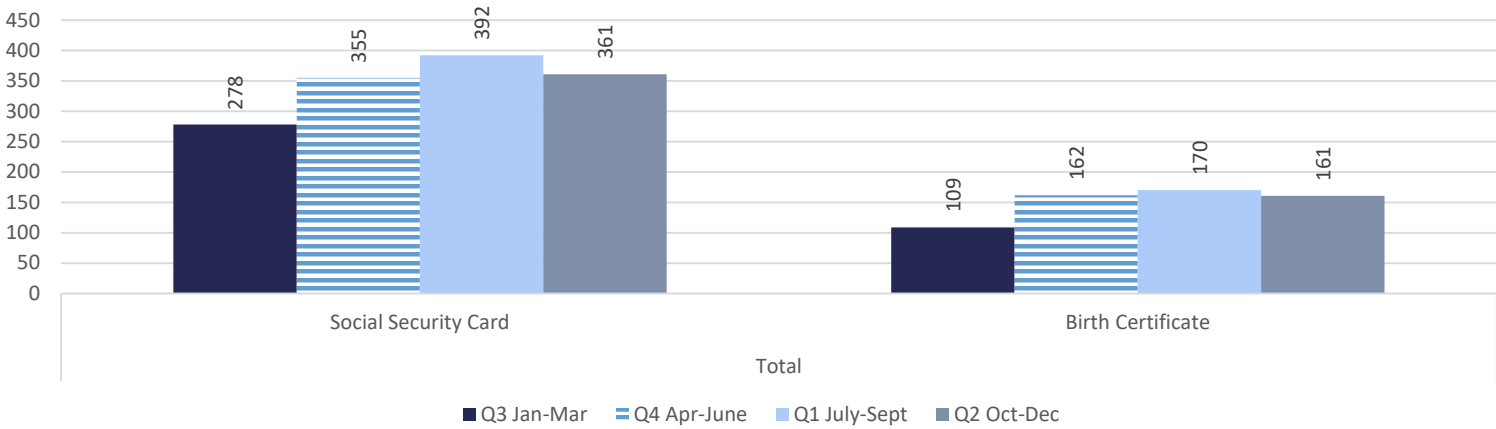


Released With Social Security Card or Birth Certificate

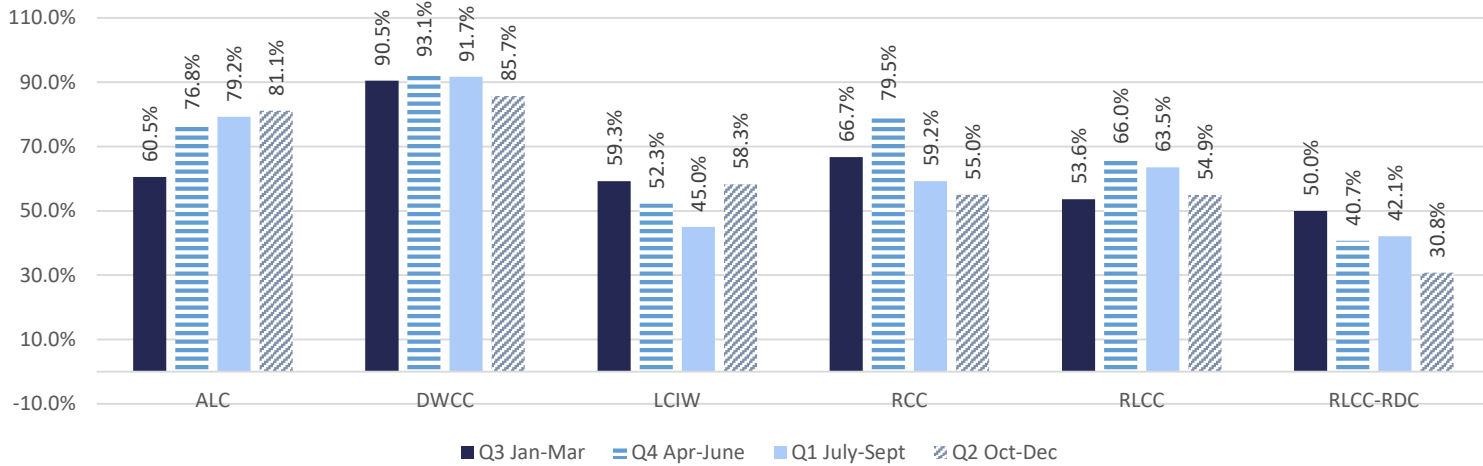
By Releases



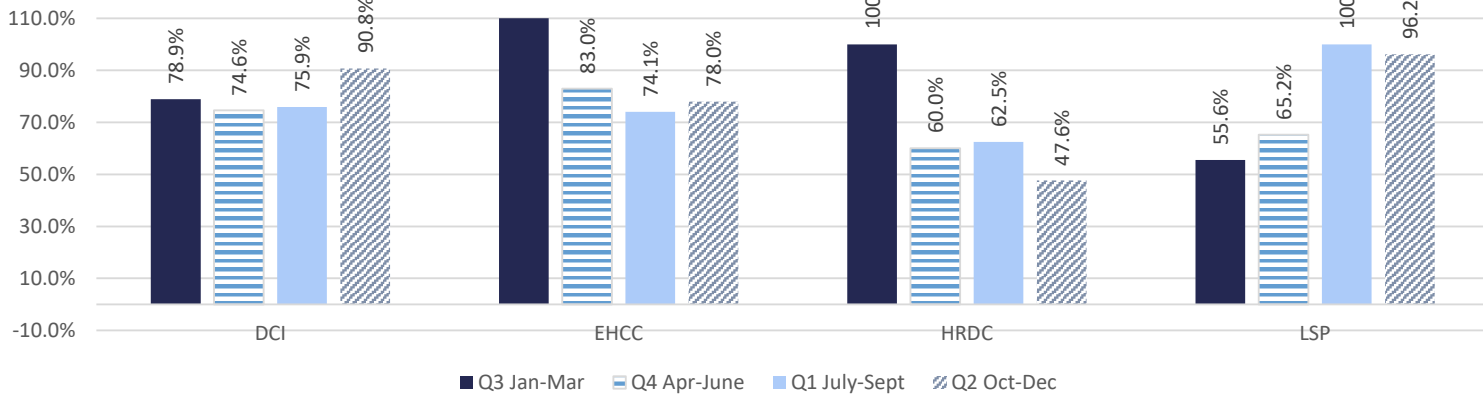
Social Security Card and Birth Certificate Totals



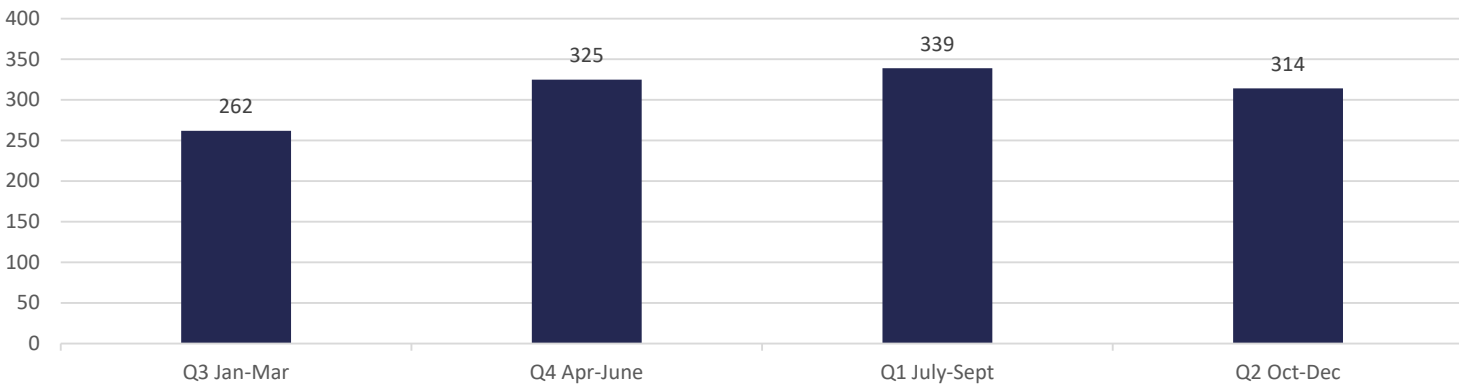
Released with State ID or Driver's License By Releases

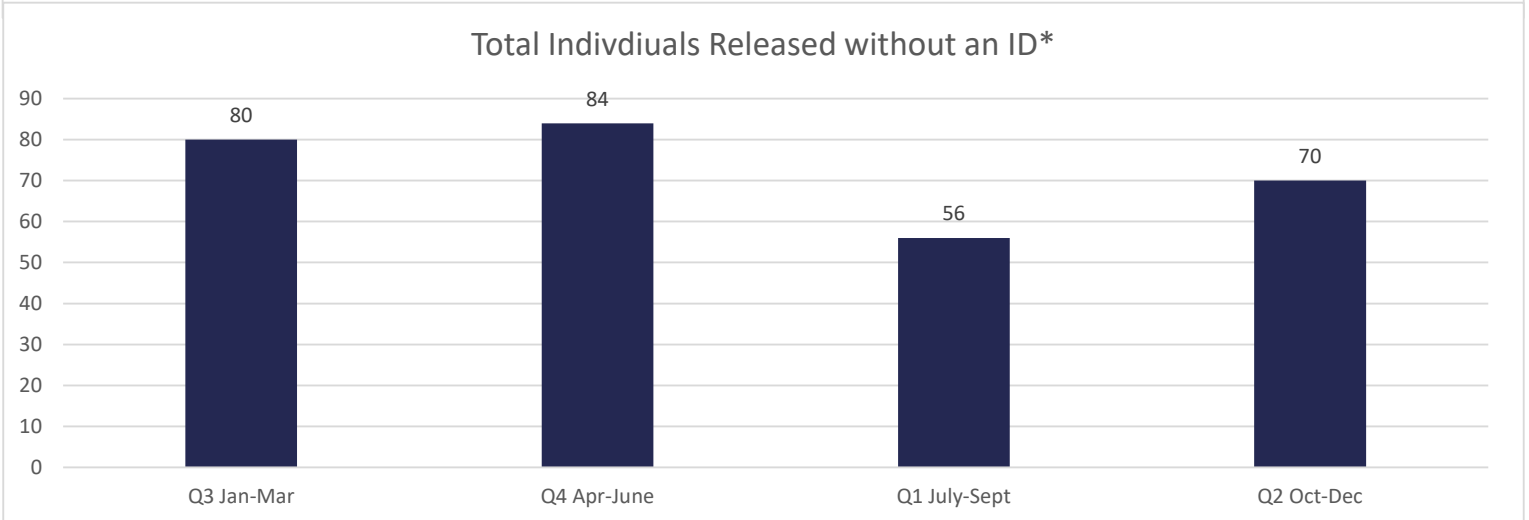
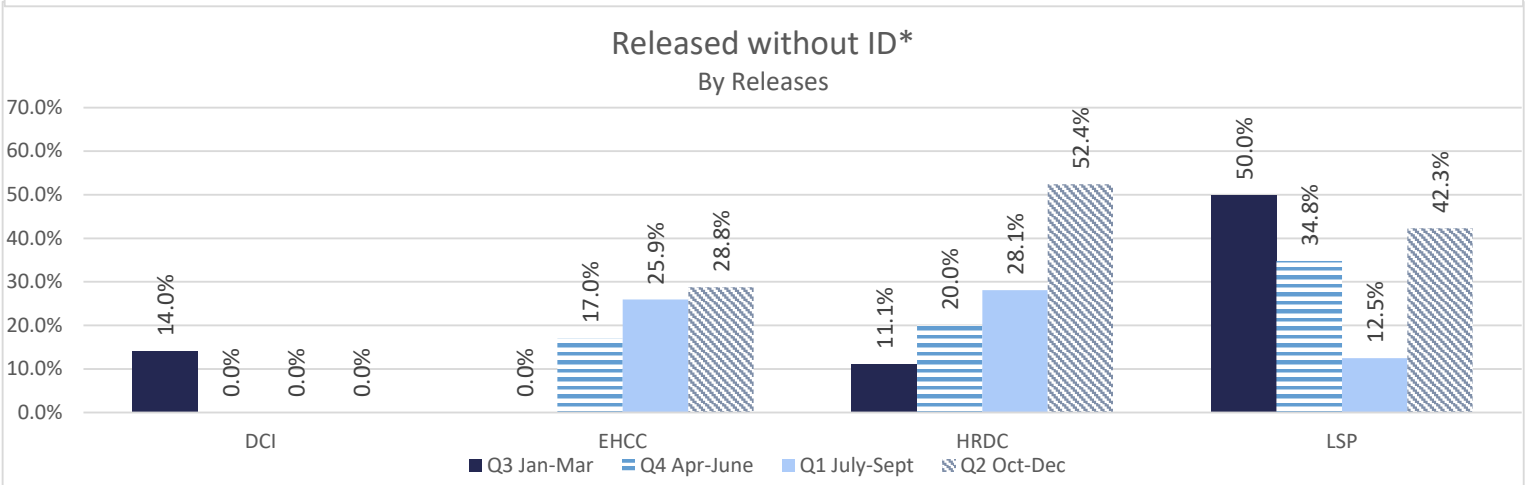
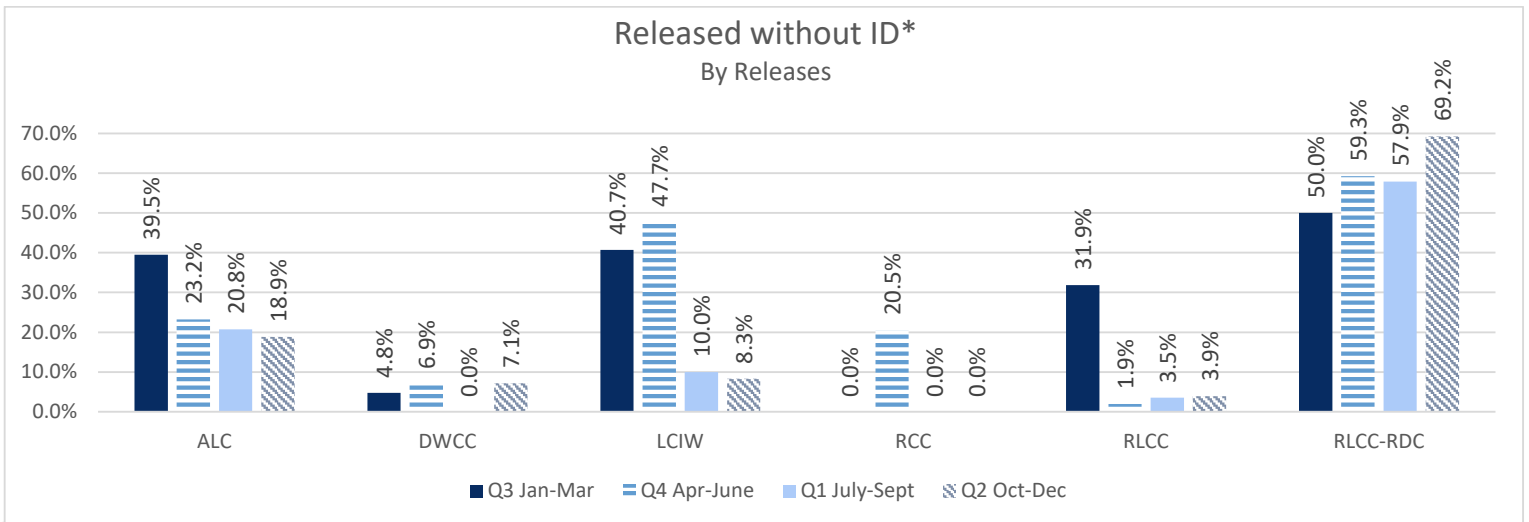


Released with State ID or Driver's License By Releases



State ID or Driver's License Total





*Individuals released with no personal identification

(i.e. - State I.D., Social Security Card, Driver's license or Birth Certificate)

* Numbers are skewed in Q2, Q3, and Q4 due to inconsistencies that have been clarified beginning in Q1.

Q2 Releases without ID:

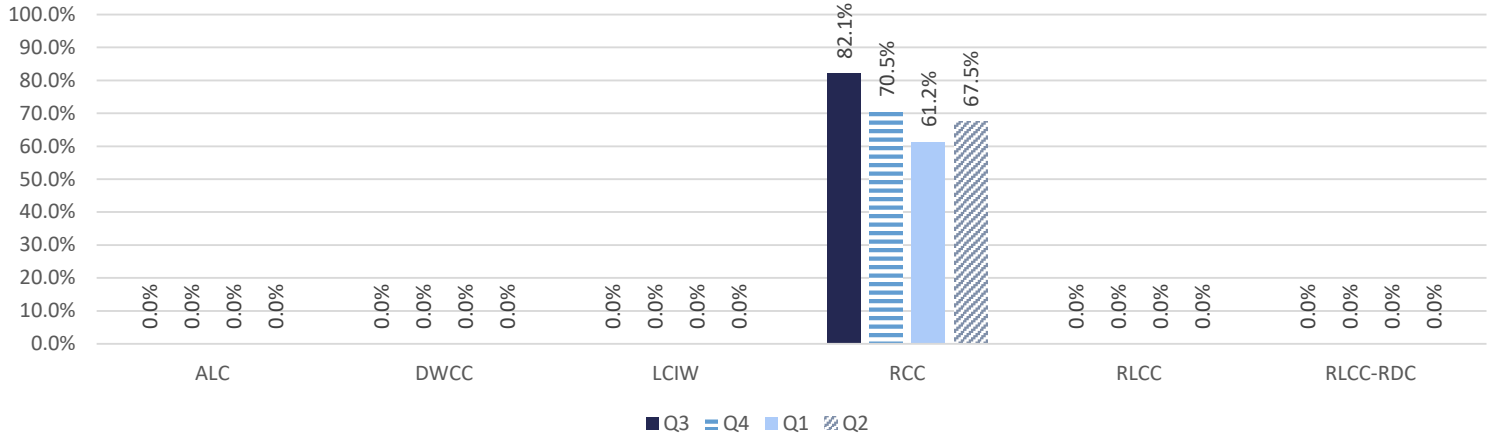
30 released to detainers

6 released to out-of-state addresses

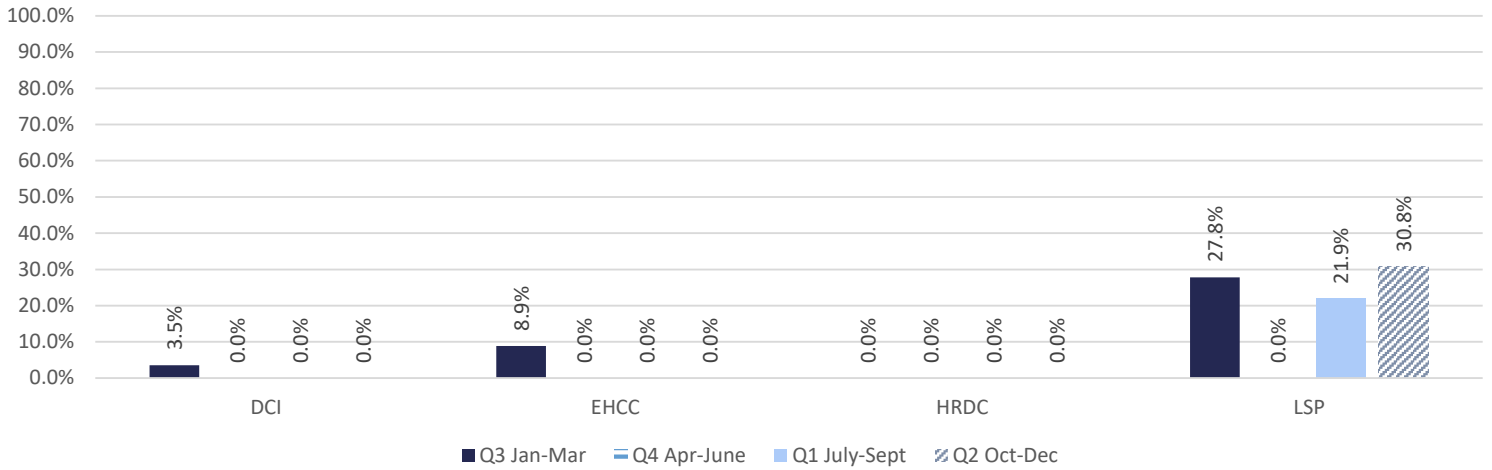
10 refused to provide necessary information

19 were short-term holds or other reasons

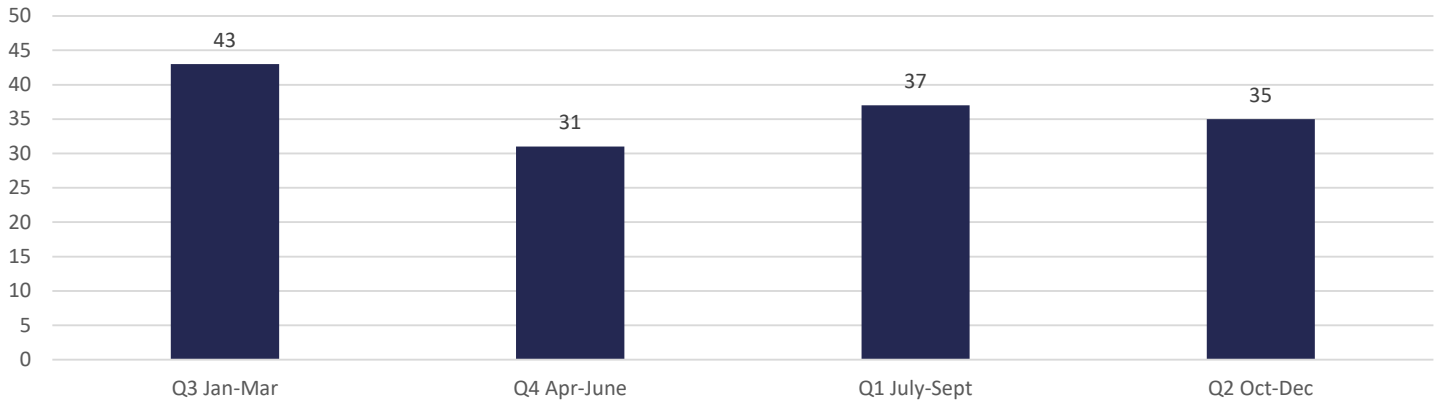
Referrals to Community Resources- Employment By Releases



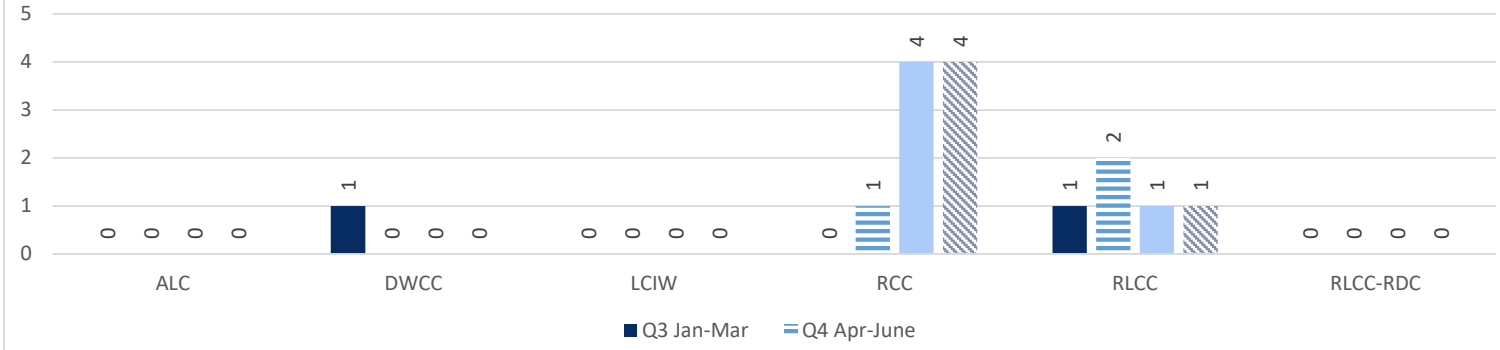
Referrals to Community Resources- Employment By Releases



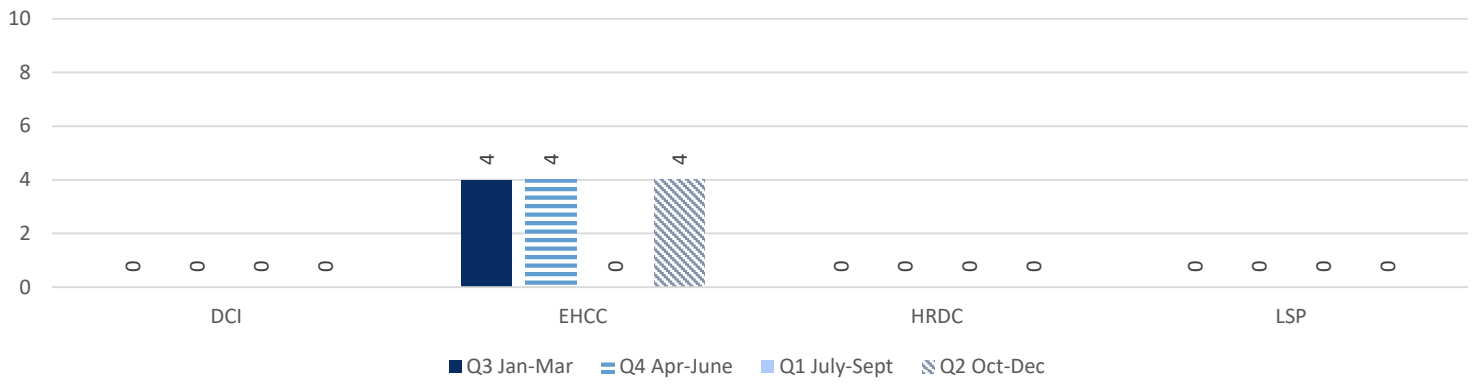
Referrals to Community Resources- Employment Total



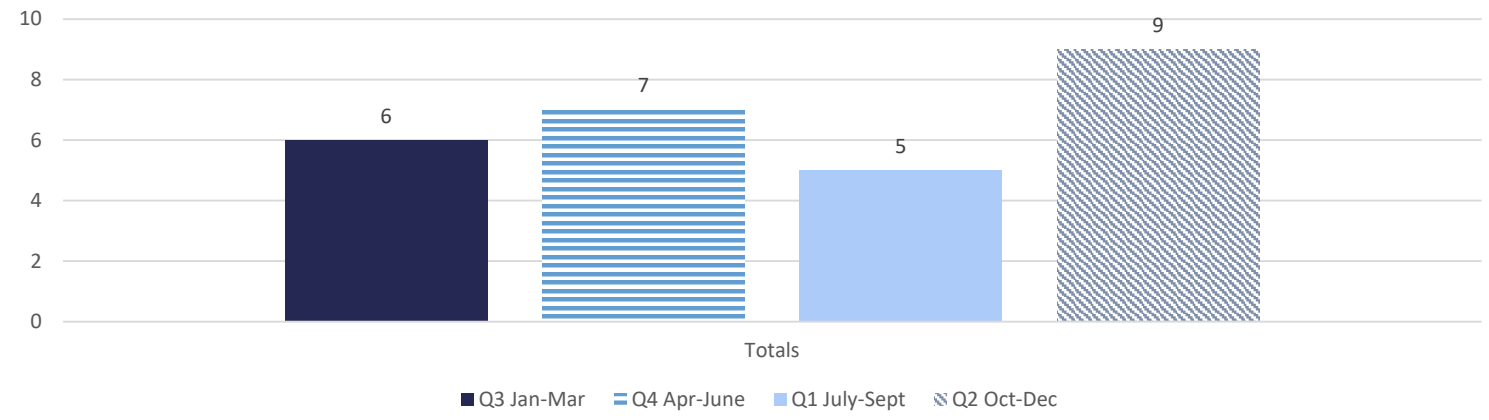
Refused Programming



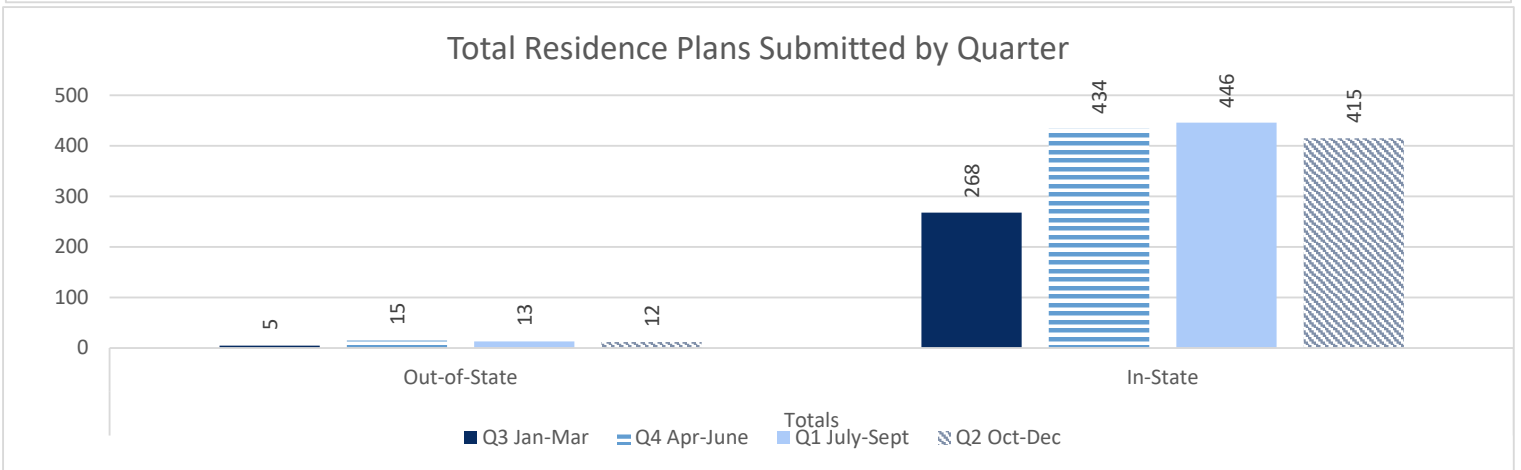
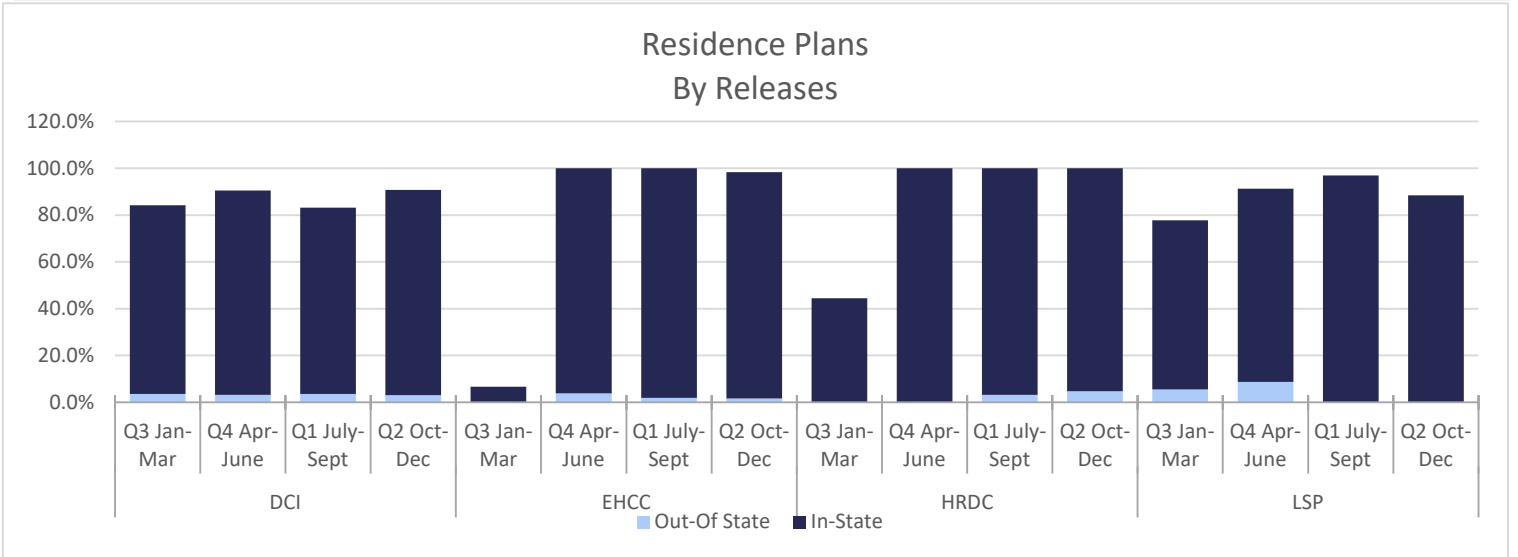
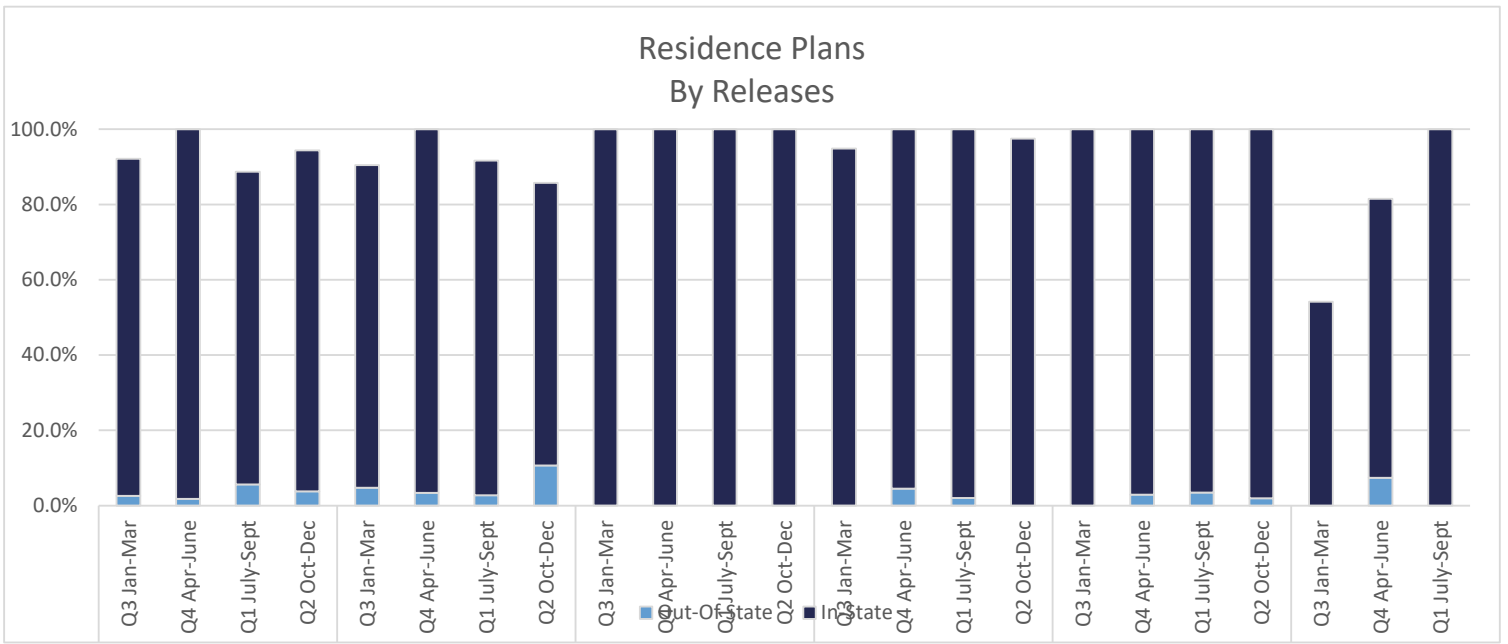
Refused Programming

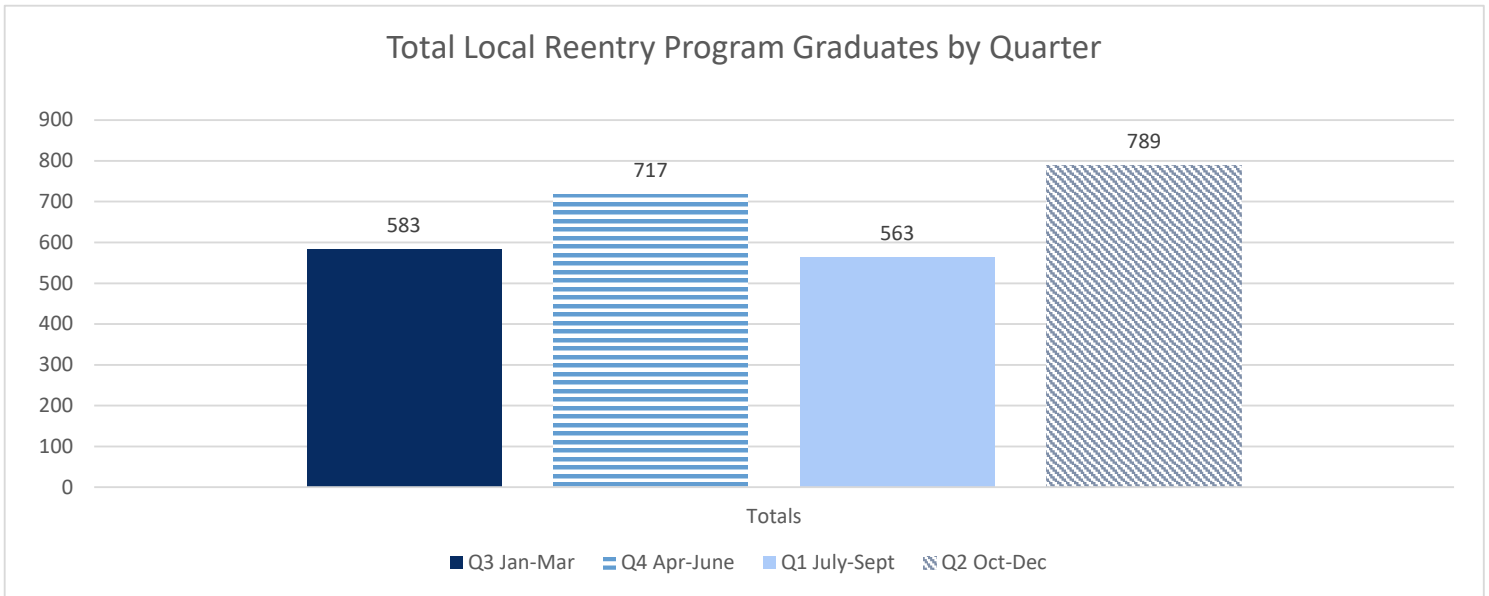
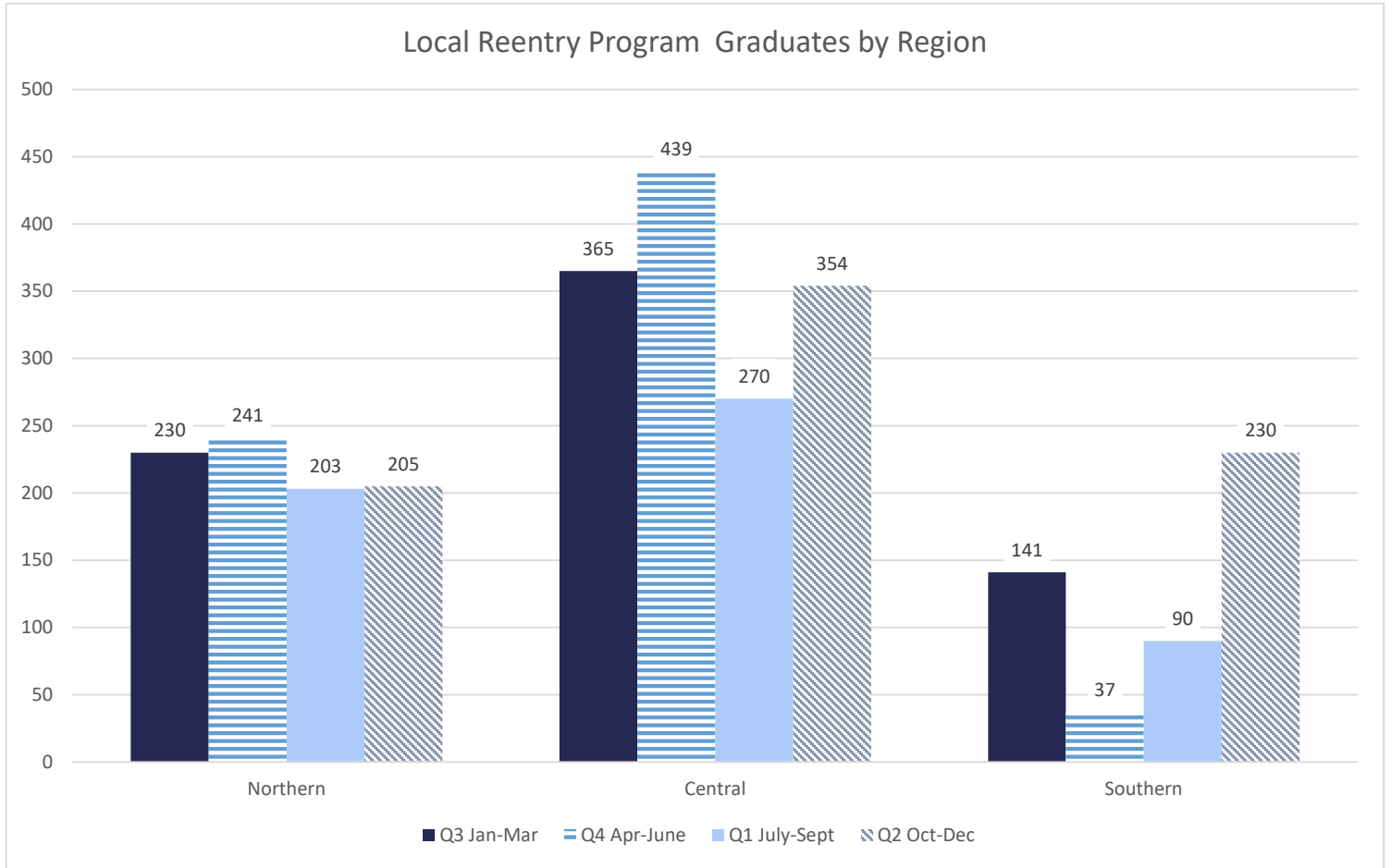


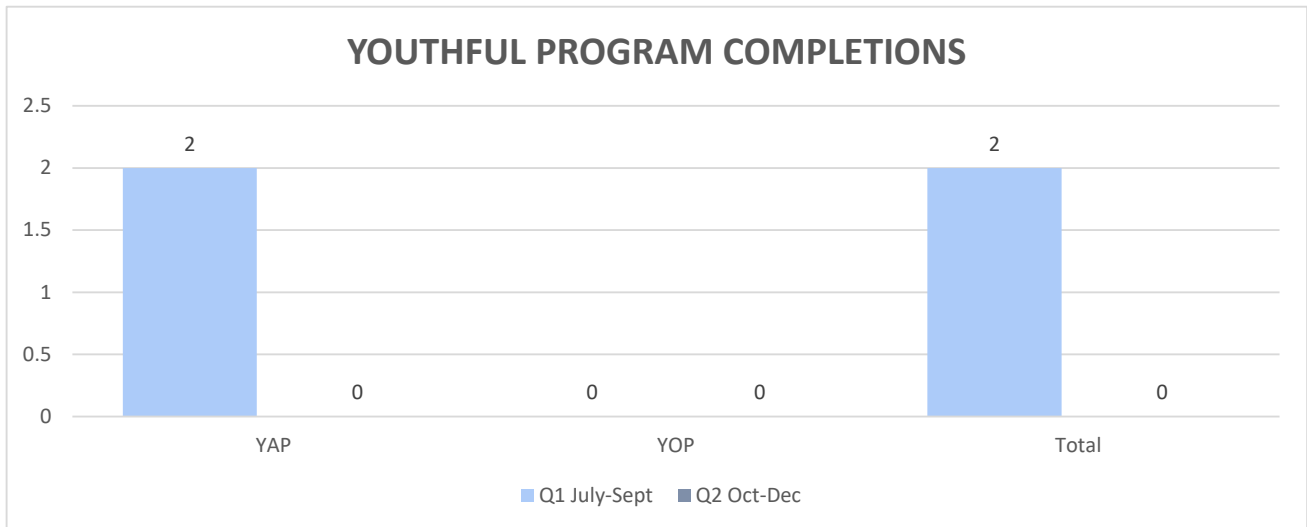
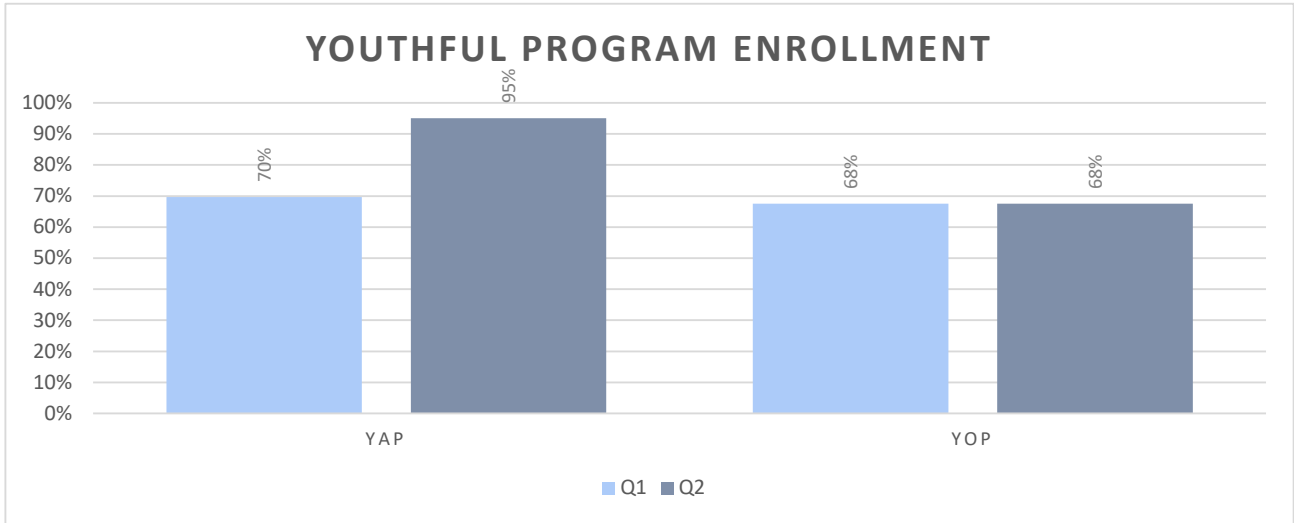
Total Individuals Who Refused Programming by Quarter



Refused Reentry/Programming-Count the number of offenders who have refused participation in reentry or pre-release programming. This number should not include education refusals. This number should not include offenders who have signed a refusal and are releasing within 6-24 months.







This is the first fiscal year that this data is being captured.

Education Quarterly Summary

Fiscal Year 2024-2025

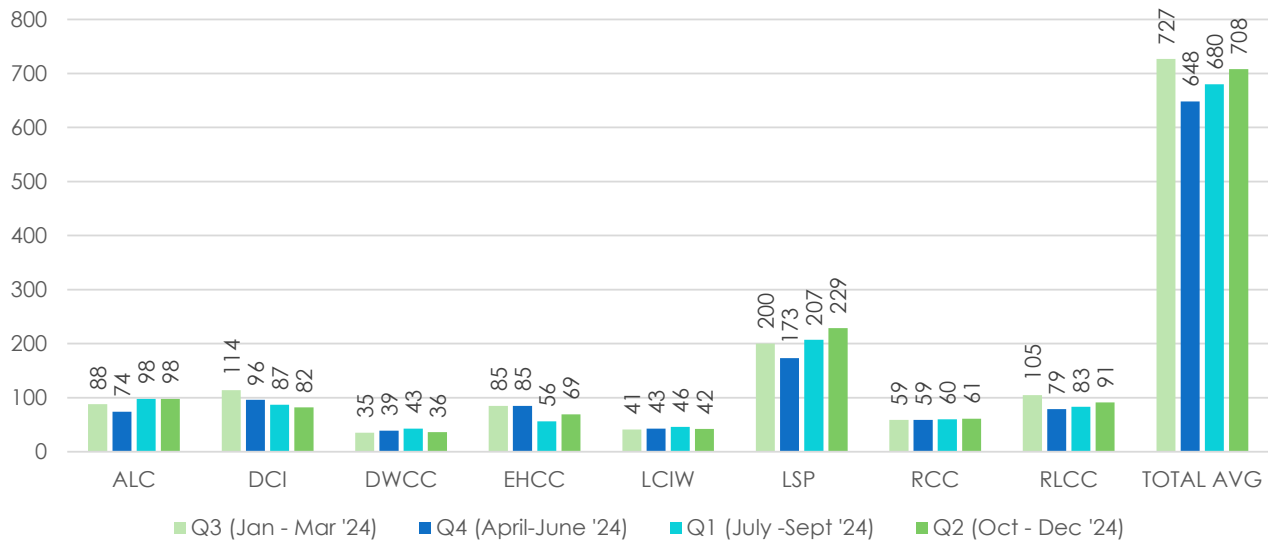
Parishes with DPS&C Education Programs

| | | |
|--------------------|----------|--------------------|
| Acadia | Academic | |
| Allen | Academic | Post-Secondary |
| Avoyelles (2) | Academic | Post-Secondary (1) |
| Beauregard | Academic | Post-Secondary |
| Bossier | Academic | Post-Secondary |
| Caddo | Academic | Post-Secondary |
| Caldwell | Academic | Post-Secondary |
| Claiborne (2) | Academic | Post-Secondary |
| East Baton Rouge | | |
| East Carroll | | Post-Secondary |
| East Feliciana (2) | Academic | Post-Secondary |
| Franklin | Academic | Post-Secondary |
| Iberville (3) | Academic | Post-Secondary (2) |
| Jackson | | Post-Secondary |
| Lafayette | Academic | Post-Secondary |
| Lafourche | Academic | Post-Secondary |
| Livingston | Academic | Post-Secondary |
| Madison (2) | Academic | Post-Secondary (1) |
| Morehouse | Academic | Post-Secondary |
| Natchitoches | Academic | Post-Secondary |
| Ouachita | Academic | Post-Secondary |
| Plaquemines | Academic | Post-Secondary |
| Rapides | Academic | Post-Secondary |
| Red River | Academic | |
| Richland | Academic | Post-Secondary |
| St. Landry | Academic | |
| St. Martin | Academic | |
| St. Tammany | | |
| Tangipahoa | Academic | Post-Secondary |
| Terrebonne | Academic | Post-Secondary |
| Washington | Academic | Post-Secondary |
| Webster | Academic | Post-Secondary |
| West Baton Rouge | Academic | Post-Secondary |
| West Feliciana | Academic | Post-Secondary |
| *Closed | | |

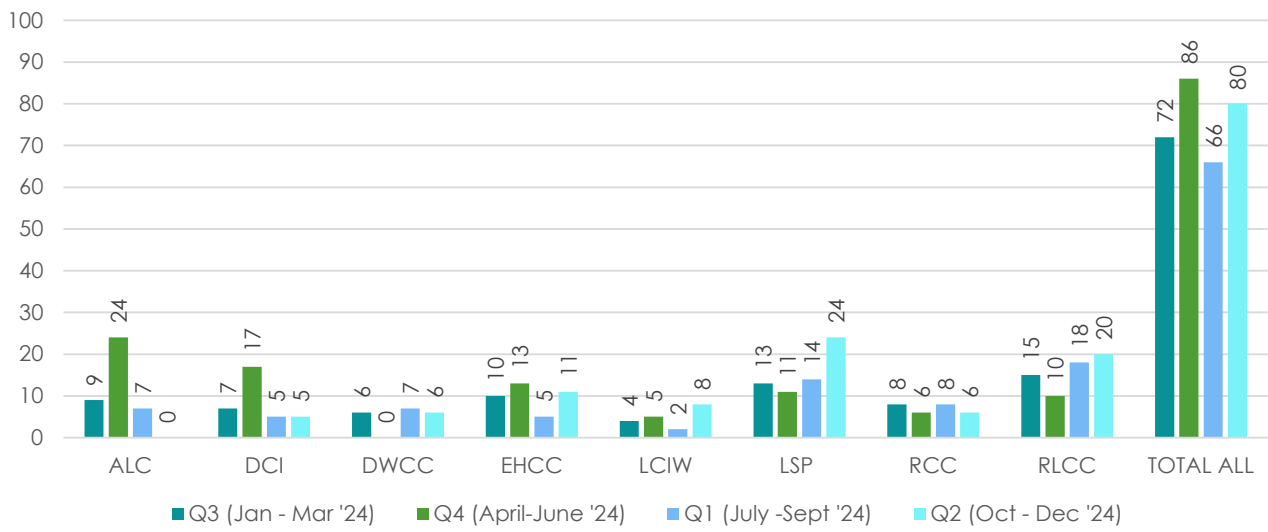
State Facility Education Programs

Adult Education/HiSET Programs

Average Enrolled - ABE/HiSET



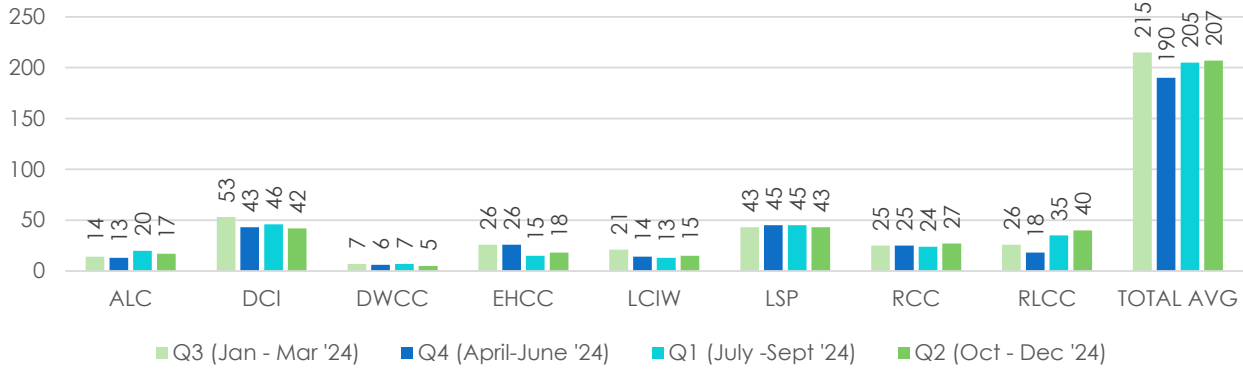
HiSET Graduates



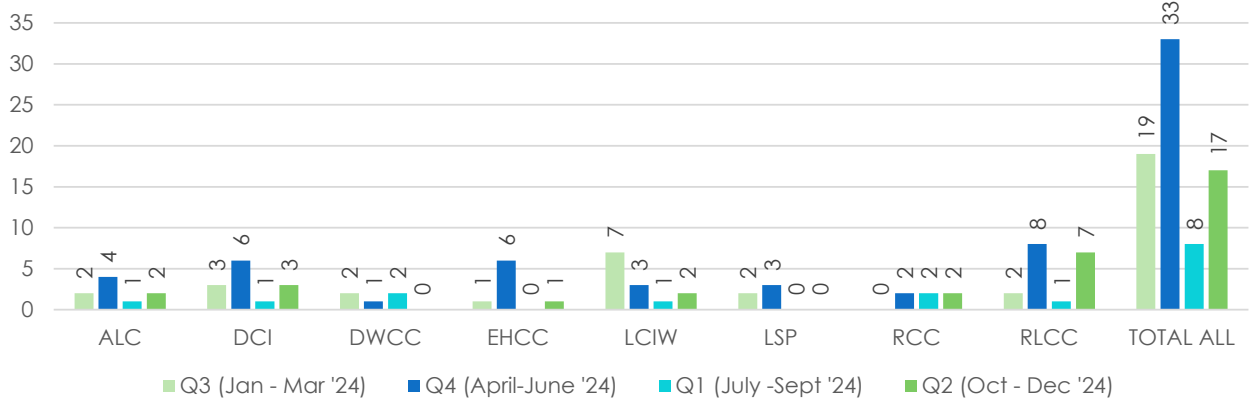
State Facility Education Programs, Cont.

Literacy Programs

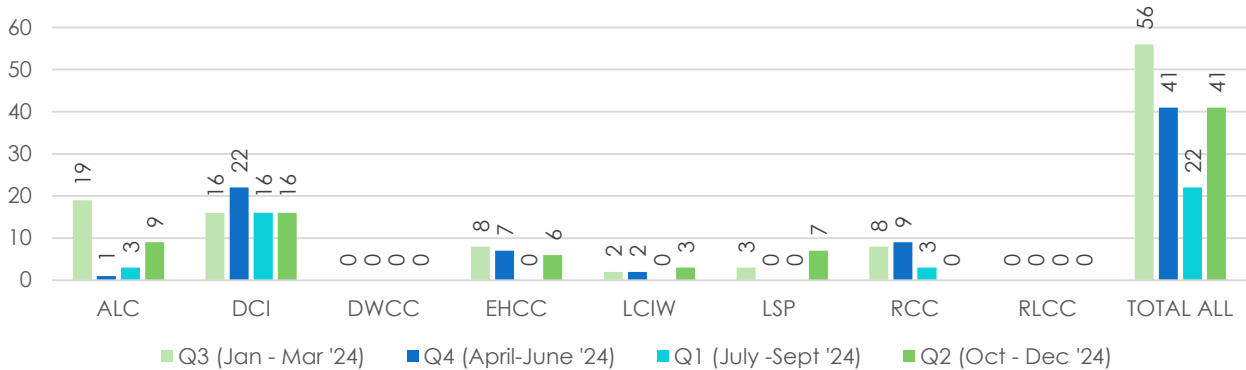
Average Enrolled - Literacy



Completions - Literacy

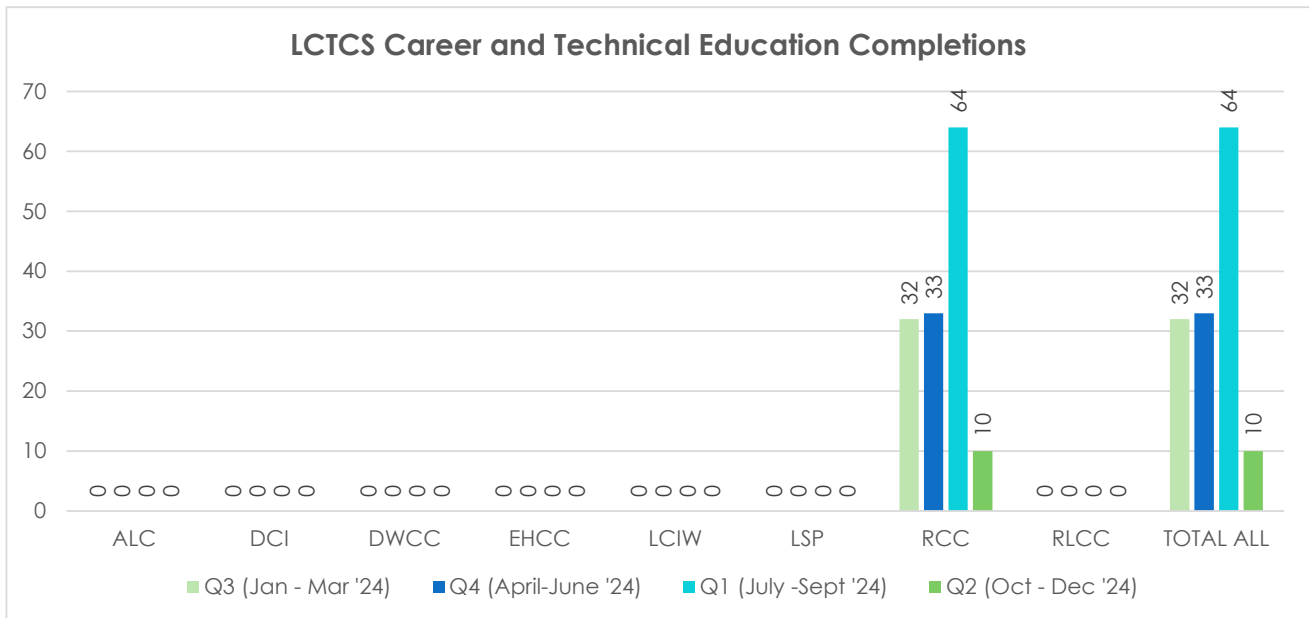
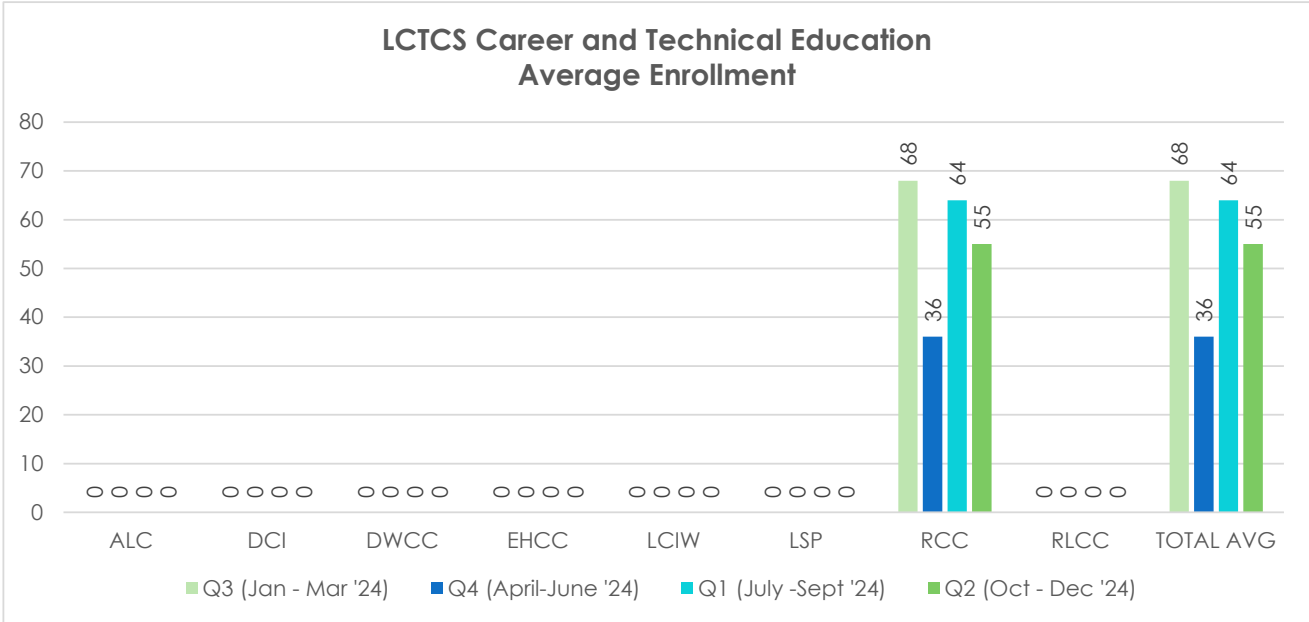
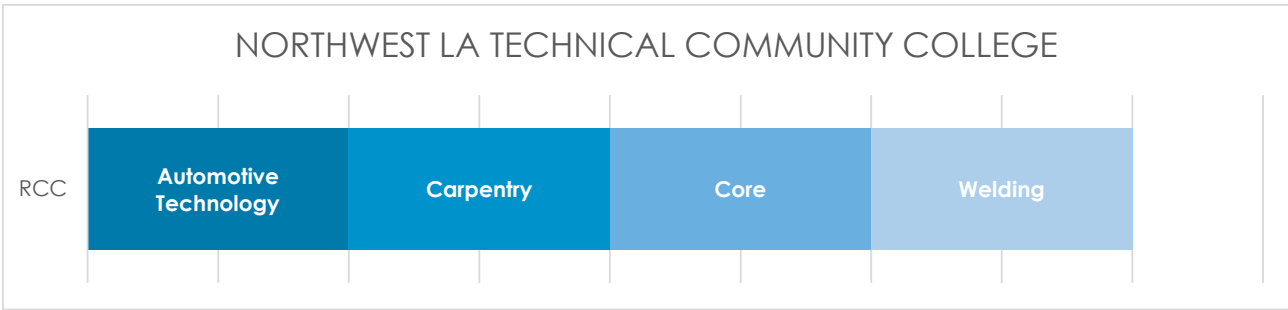


Education Refusals



State Facility Education Programs, Cont.

LCTCS Career and Technical Education Programs



State Facility Education Programs, Cont.

DPS&C Career and Technical Education Programs

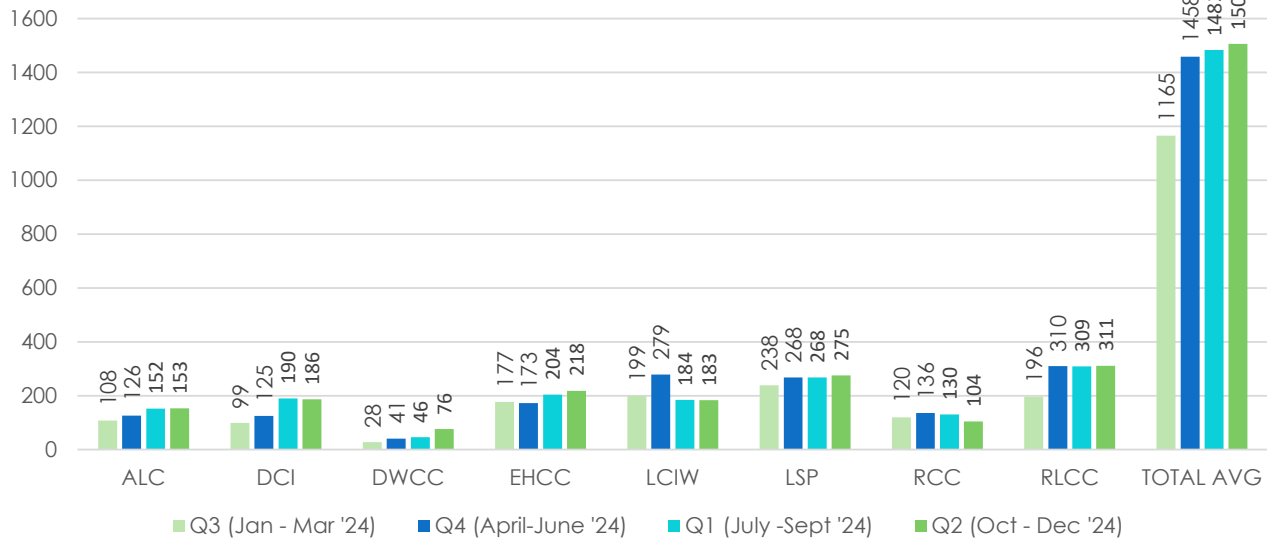
Fiscal Year 2024-2025

| | | | | | | | | |
|--------------------------------------|------|------|------|------|------|------|-----|------|
| Welding | DCI | EHCC | LCIW | LSP | RCC | RLCC | | |
| Welder-Fitter | ALC | | | | | | | |
| Southwest Professional Communication | ALC | DCI | DWCC | EHCC | LCIW | LSP | RCC | RLCC |
| Site Layout/Surveying | EHCC | | | | | | | |
| ServSafe | ALC | DCI | DWCC | EHCC | LCIW | LSP | RCC | RLCC |
| Safety Technician | DWCC | EHCC | LCIW | RLCC | | | | |
| Project Supervision | EHCC | RLCC | | | | | | |
| Project Management | EHCC | | | | | | | |
| Principles of Manufacturing | ALC | | | | | | | |
| Plumbing | LSP | | | | | | | |
| Plant Science | LCIW | RCC | | | | | | |
| Personal Financial Literacy | ALC | DCI | DWCC | EHCC | LCIW | LSP | RCC | RLCC |
| Outdoor Power Equipment | ALC | DCI | EHCC | LSP | RCC | RLCC | | |
| OSHA 30 | ALC | DCI | DWCC | EHCC | LCIW | LSP | RCC | RLCC |
| OSHA 10 | ALC | DCI | DWCC | EHCC | LCIW | LSP | RCC | RLCC |
| Microsoft Office Specialist | LCIW | | | | | | | |
| Medical Lab Assistant | LCIW | | | | | | | |
| Meat Evaluation | ALC | DCI | DWCC | EHCC | LCIW | LSP | RCC | RLCC |
| Masonry | LSP | RLCC | | | | | | |
| Maritime Structural Fitter | LSP | | | | | | | |
| Introduction to Maritime | EHCC | | | | | | | |
| Instructor Certification Training | ALC | DCI | DWCC | EHCC | LCIW | LSP | RCC | RLCC |
| HVAC | EHCC | LSP | | | | | | |
| Horticulture | LCIW | | | | | | | |
| Heavy Equipment | EHCC | LCIW | | | | | | |
| Generator Repair | LSP | | | | | | | |
| General Construction | LSP | | | | | | | |
| Furniture Restoration | ALC | EHCC | LCIW | | | | | |
| Furniture Manufacturing | ALC | EHCC | | | | | | |
| Forklift Operation | ALC | RLCC | | | | | | |
| Food Safety & Science | ALC | DCI | DWCC | EHCC | LCIW | LSP | RCC | RLCC |
| Field Safety | ALC | DWCC | EHCC | LCIW | RLCC | | | |
| Fall Protection | ALC | DWCC | EHCC | LCIW | RLCC | | | |
| EPA 608 | EHCC | LSP | | | | | | |
| Electrician System Technology | EHCC | | | | | | | |
| Electrical | EHCC | LSP | | | | | | |
| Digital Literacy/IC3 | ALC | DCI | DWCC | EHCC | LCIW | LSP | RCC | RLCC |
| Culinary Meat Selection & Cookery | ALC | DCI | DWCC | EHCC | LCIW | LSP | RCC | RLCC |
| Crew Leadership | ALC | DWCC | EHCC | LCIW | LSP | RLCC | | |
| Cosmetology-Teacher-Training | LCIW | | | | | | | |
| Cosmetology | LCIW | | | | | | | |
| Core | ALC | DCI | DWCC | EHCC | LCIW | LSP | RCC | RLCC |
| Construction Technology | RCC | | | | | | | |
| Concrete Refinishing | LSP | | | | | | | |
| Computer Coding/Python | ALC | DWCC | EHCC | LSP | RLCC | | | |
| Collision Repair | DCI | LSP | RLCC | | | | | |
| CDL/Truck Driving | LSP | | | | | | | |
| Carpentry | DWCC | EHCC | LSP | | | | | |
| Career Preparedness | ALC | DCI | DWCC | EHCC | LCIW | LSP | RCC | RLCC |
| Cabinet Making/Installation | LCIW | | | | | | | |
| Business Office Technician | ALC | DCI | DWCC | EHCC | LCIW | LSP | RCC | RLCC |
| Building Technology | LSP | RCC | RLCC | | | | | |
| Automotive Technology | DCI | EHCC | LSP | RCC | RLCC | | | |

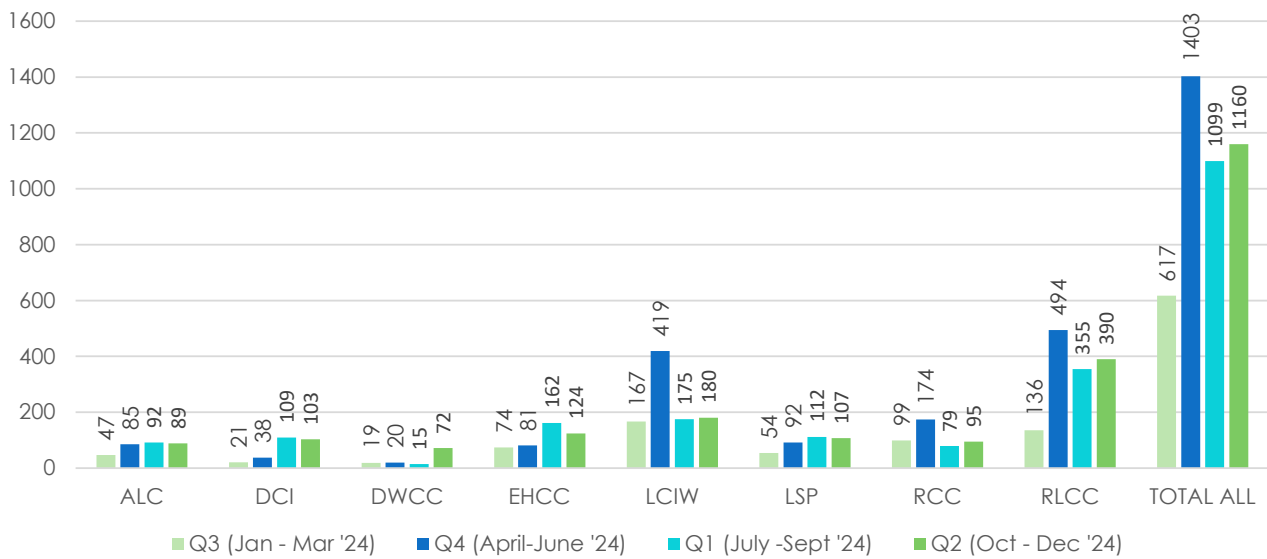
State Facility Education Programs, Cont.

DPS&C Career and Technical Education Programs

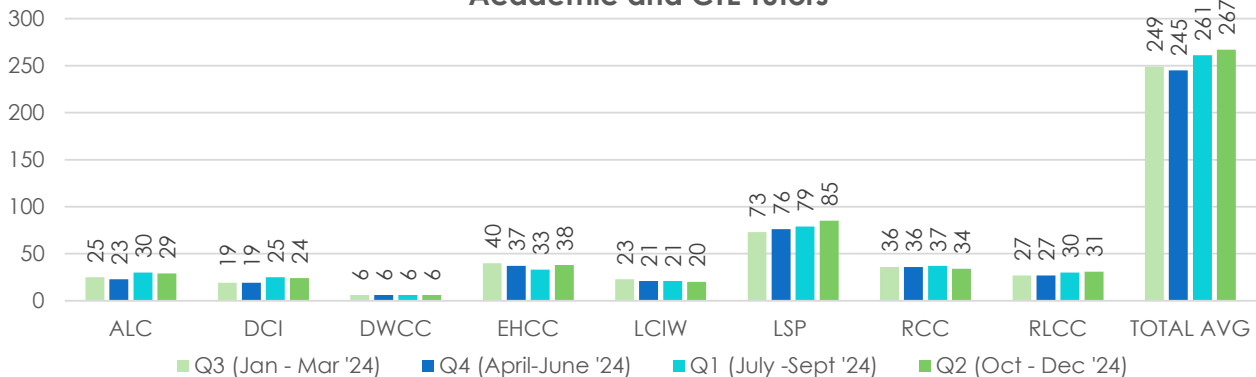
DPSC Industry Based Certification Average Enrollment



DPSC Industry Based Certification Completions



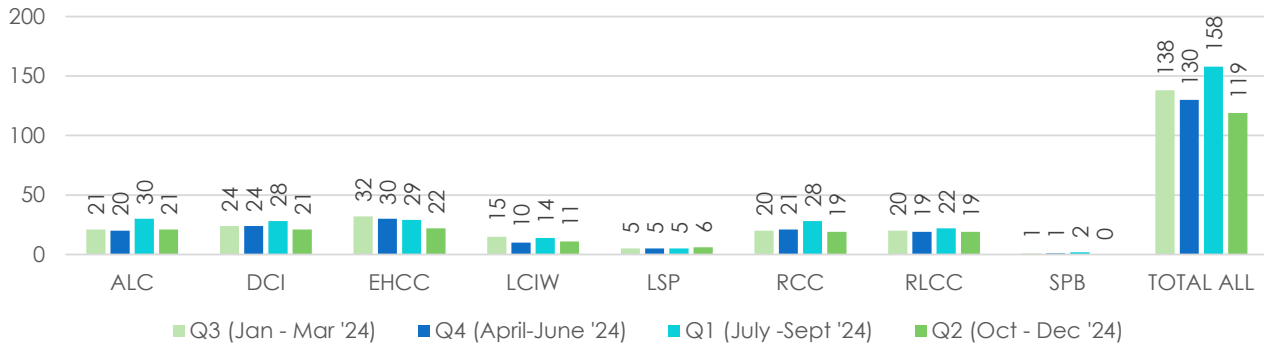
Academic and CTE Tutors



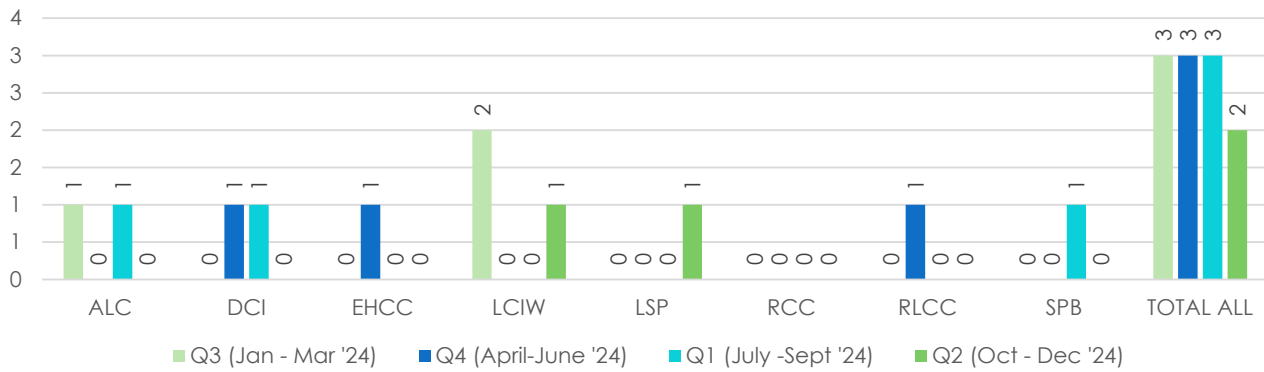
State Facility Education Programs, Cont.

Pell Funded Education Programs

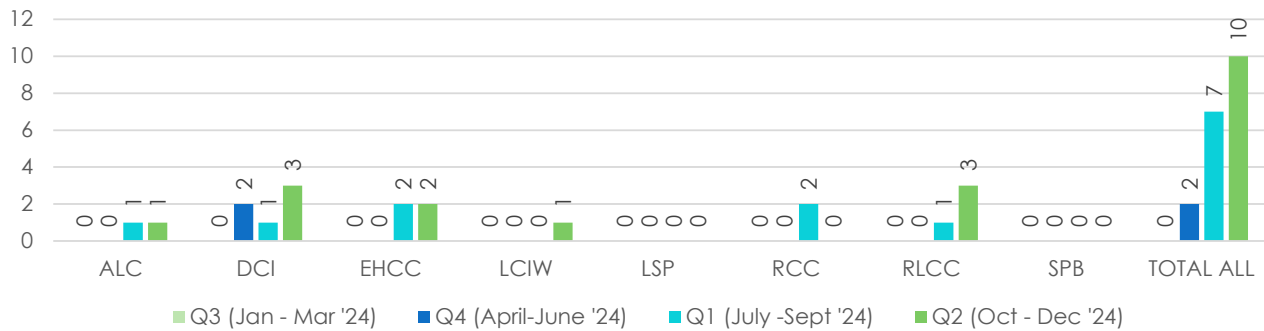
Ashland Enrollment - Pell Experimental Study



Ashland Bachelor Degree Graduates Pell Experimental Study



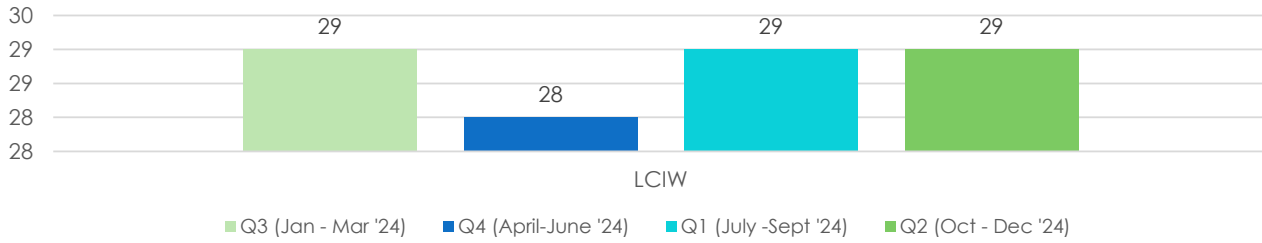
Ashland Associates Degree Graduates Pell Experimental Study



State Facility Education Programs, Cont.

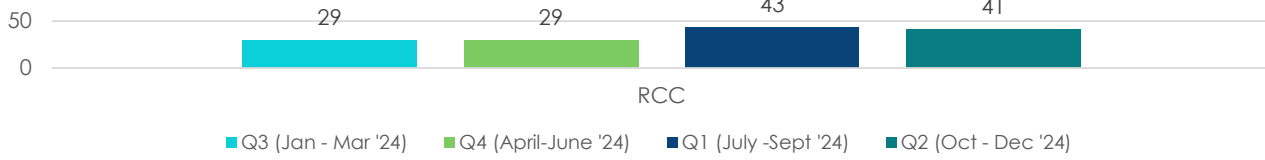
Pell Funded Education Programs, Cont.

Tulane University Enrollment

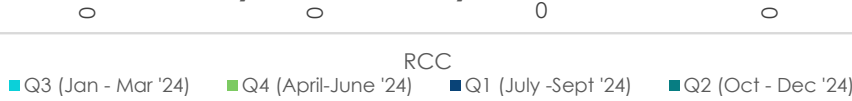


The Tulane University program continues to offer College credit to the women at LCIW through virtual and face to face instruction. There are no completions for the Tulane program because this is a 4 year degree and the students are taking minimal credit hours per semester.

Loyola University College Enrollment

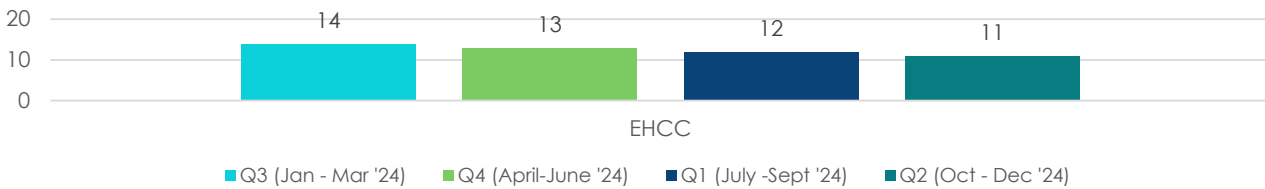


Loyola University Graduates



This is a 4 year degree offered to staff and offenders. The students are taking minimal credit hours per semester so there are no graduates yet. Graduates are not anticipated until 2026 and beyond.

Fletcher Community College Enrollment



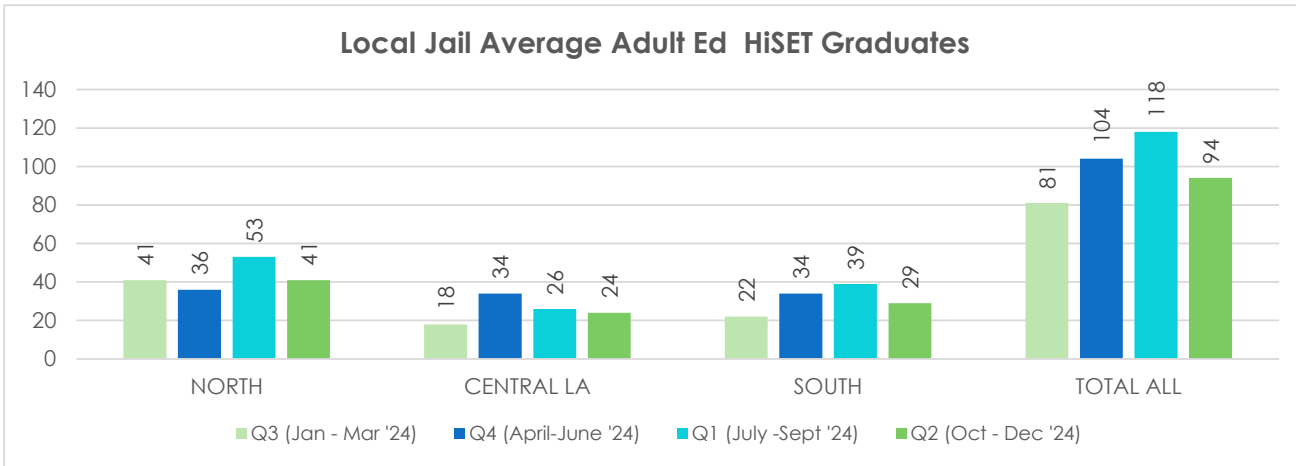
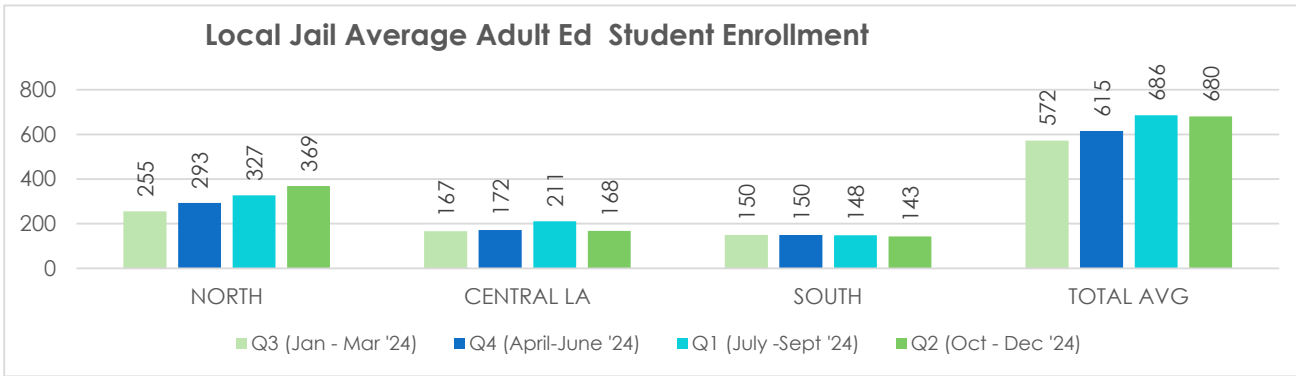
Fletcher Community College Associates Degree Graduates



Fletcher Community College offers College credit to the men at EHCC through virtual and face to face instruction. There are no completions for the Tulane program because this is a 4 year degree and the students are taking minimal credit hours per semester.

Local Facility Education Programs

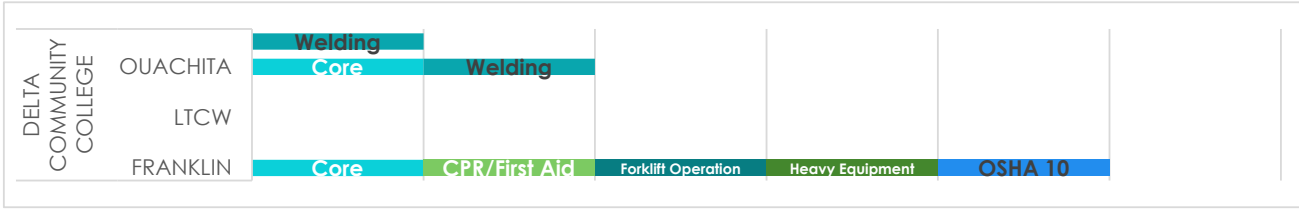
Adult Education/HiSET Programs



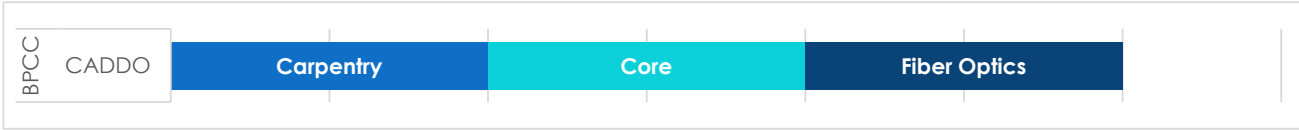
Local Facility Education Programs, Cont.

LCTCS CTE Programs FY 24-25

Louisiana Delta Community College



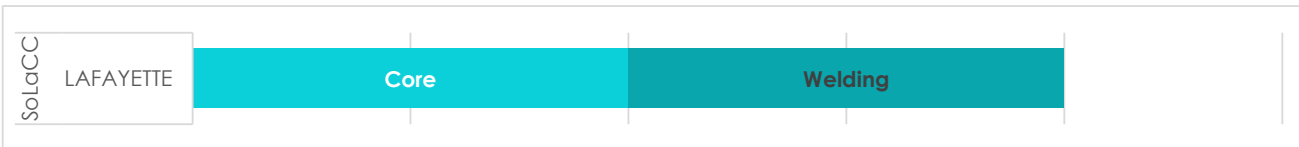
Bossier Parish Community College



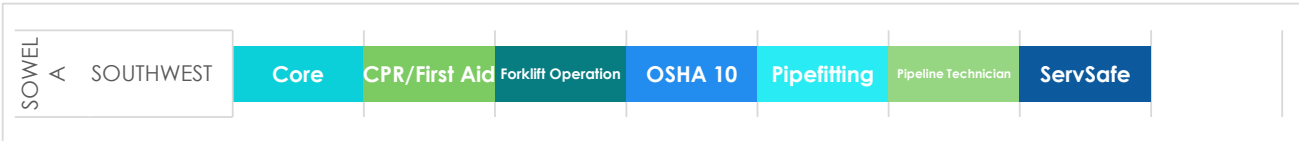
Central Louisiana Technical Community College



South Louisiana Community College

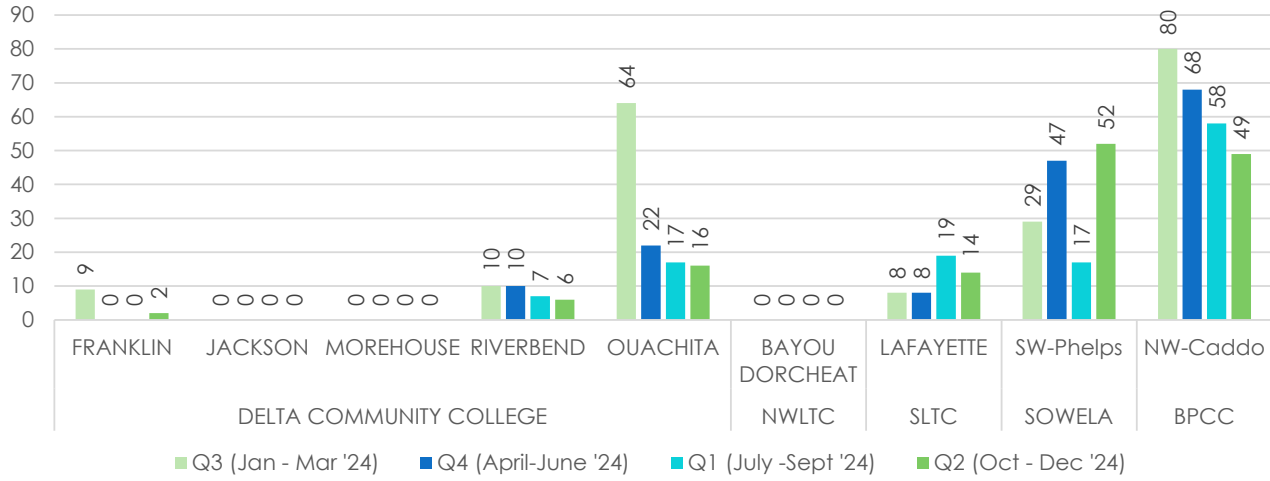


Southwest Louisiana Community College

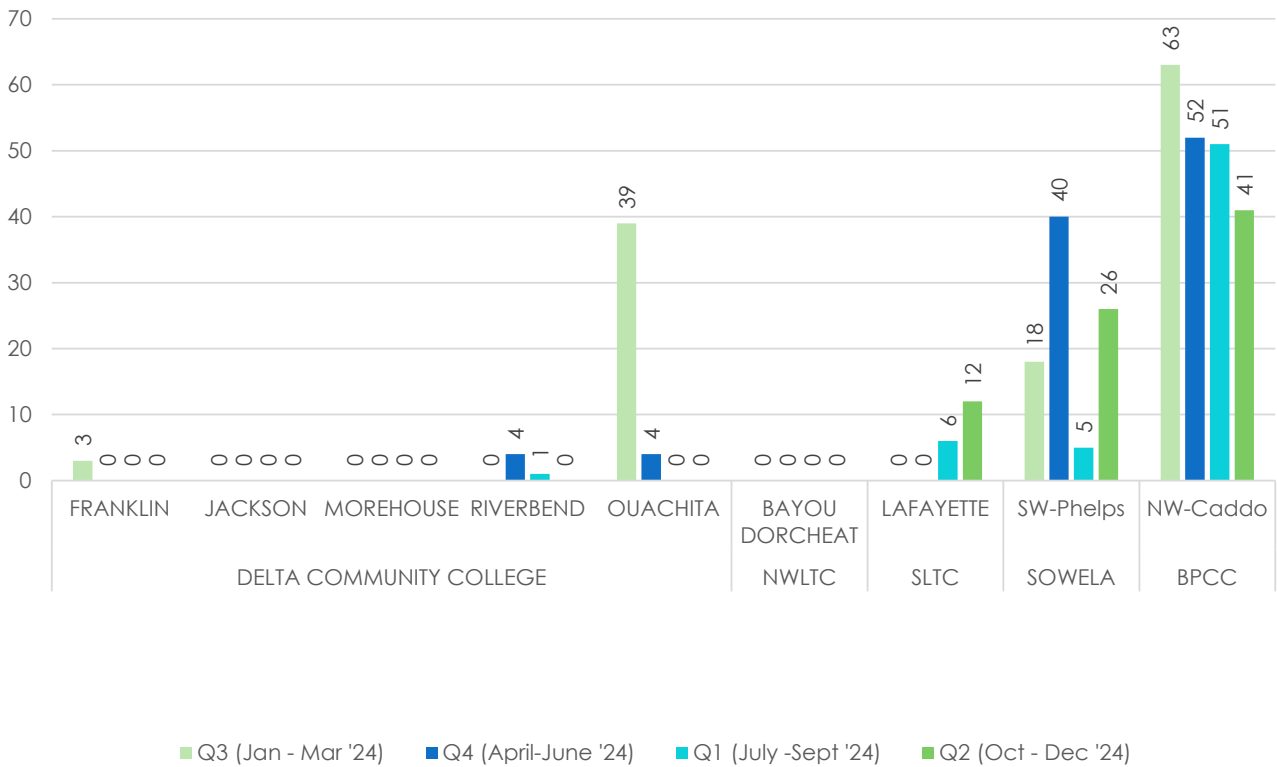


LCTCS CTE Programs FY 24-25, Cont.

Local Jail Career and Technical Education Enrollment



Local Jail Career and Technical Education Completions



LOCAL FACILITY EDUCATION PROGRAMS, CONT.

Industry Based Certification Programs

North Programs: Fiscal Year 2024-2025

| | | | | | | | | |
|-----------------------------------|---------------|----------------|---------------|-------------|---------------|-----------|-----------|--|
| Welding | OUACHITA | RIVERBEND | | | | | | |
| Southwest Professional... | FRANKLIN-STEP | | | | | | | |
| ServSafe | FRANKLIN-GP | FRANKLIN-STEP | OUACHITA | | | | | |
| Plant Science | FRANKLIN-STEP | | | | | | | |
| Pipefitting | FRANKLIN-STEP | | | | | | | |
| Personal Financial Literacy | FRANKLIN-STEP | | | | | | | |
| OSHA 10 | FRANKLIN-GP | FRANKLIN-STEP | RICHLAND | | | | | |
| Meat Evaluation | FRANKLIN-STEP | | | | | | | |
| Heavy Equipment | FRANKLIN-GP | FRANKLIN-STEP | | | | | | |
| Forklift Operation | FRANKLIN-GP | FRANKLIN-STEP | MOREHOUSE | OUACHITA | RICHLAND | | | |
| Food Safety & Science | FRANKLIN-STEP | | | | | | | |
| Fiber Optics | CADDO-NW | | | | | | | |
| Digital Literacy/IC3 | BAYOU CORR. | BAYOU DORCHEAT | CLAIBORNE | FRANKLIN-GP | FRANKLIN-STEP | MOREHOUSE | OUACHITA | |
| Culinary Meat Selection & Cookery | FRANKLIN-STEP | | | | | | | |
| CPR/First Aid | FRANKLIN-GP | FRANKLIN-STEP | RICHLAND | | | | | |
| Cosmetology | LTCW | | | | | | | |
| Core | CADDO-NW | FRANKLIN-GP | FRANKLIN-STEP | LTCW | OUACHITA | RICHLAND | RIVERBEND | |
| Carpentry | CADDO-NW | | | | | | | |
| Career Preparedness | FRANKLIN-STEP | | | | | | | |
| Business Office Technician | FRANKLIN-STEP | | | | | | | |

Central Programs: Fiscal Year 2024-2025

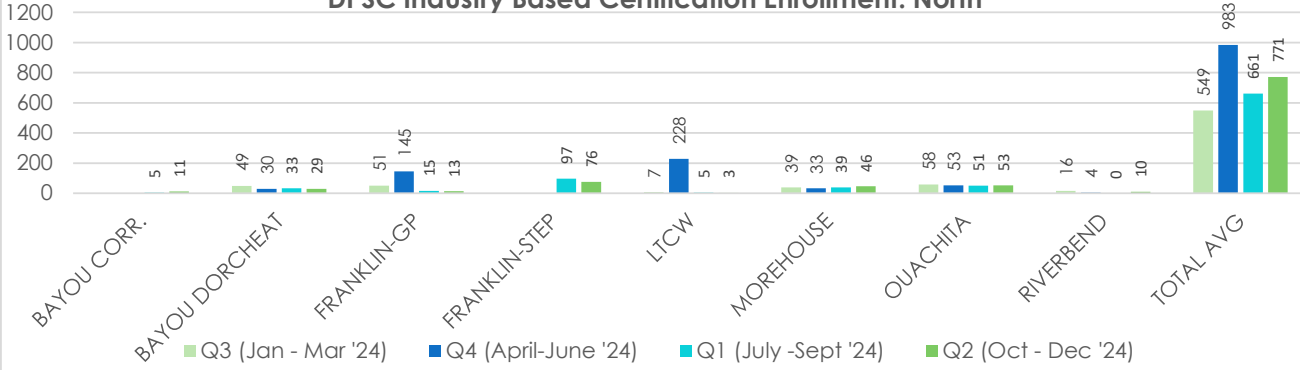
| | | | | | | | |
|-----------------------------------|---------------|-------------|-------------|-------------|--|--|--|
| Southwest Professional... | LAFAYETTE-SWC | RAPIDES-CEN | | | | | |
| | PHELPS | | | | | | |
| Pipeline Technician | LAFAYETTE-SWC | PHELPS | | | | | |
| | PHELPS | PHELPS-STEP | | | | | |
| Personal Financial Literacy | PHELPS-STEP | | | | | | |
| | PHELPS | PHELPS-STEP | | | | | |
| | PHELPS | RAPIDES-CEN | | | | | |
| Meat Evaluation | LAFAYETTE-SWC | PHELPS | | | | | |
| | RAPIDES-CEN | | | | | | |
| Forklift Operation | PHELPS | PHELPS-STEP | RAPIDES-CEN | | | | |
| | LAFAYETTE-SWC | PHELPS | | | | | |
| Fiber Optics | RAPIDES-CEN | | | | | | |
| | LAFAYETTE-SWC | PHELPS | RAPIDES-CEN | | | | |
| Culinary Meat Selection & Cookery | LAFAYETTE-SWC | PHELPS | | | | | |
| | LAFAYETTE-SWC | PHELPS | PHELPS-STEP | RAPIDES-CEN | | | |
| Career Preparedness | PHELPS | | | | | | |

South Programs: Fiscal Year 2024-2025

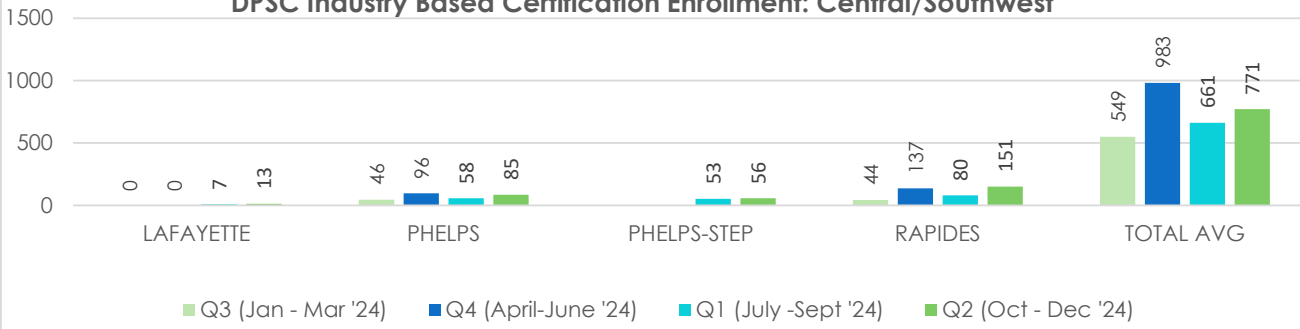
| | | | | | | | |
|------------------------------|------------|------------|------------|------------|-----------|-------------|------------|
| Welding | LAFOUR-SEC | | | | | | |
| Southwest Professional... | LAFOUR-SEC | | | | | | |
| ServSafe | EBR-CAP E. | LAFOUR-SEC | LIVINGSTON | PLAQUE-SE | | | |
| Personal Financial Literacy | LAFOUR-SEC | | | | | | |
| Outdoor Power Equipment | EAST FEL. | | | | | | |
| Meat Evaluation | EBR-CAP E. | LAFOUR-SEC | PLAQUE-SE | | | | |
| Forklift Operation | LAFOUR-SEC | | | | | | |
| Food Safety & Science | EBR-CAP E. | LAFOUR-SEC | PLAQUE-SE | | | | |
| Digital Literacy/IC3 | EAST FEL. | EBR-CAP E. | LAFOUR-SEC | LIVINGSTON | PLAQUE-SE | ST. TAMMANY | TERREBONNE |
| Culinary Meat Selection &... | EBR-CAP E. | LAFOUR-SEC | PLAQUE-SE | | | | |
| Core | PLAQUE-SE | | | | | | |
| Collision Repair | LAFOUR-SEC | | | | | | |
| Carpentry | PLAQUE-SE | | | | | | |
| Career Preparedness | LAFOUR-SEC | | | | | | |
| Cabling Technology | PLAQUE-SE | | | | | | |
| Automotive Technology | EBR-CAP E. | LAFOUR-SEC | TANGIPAHOA | | | | |

Local Facility Education Programs, Cont. Industry Based Certification Programs

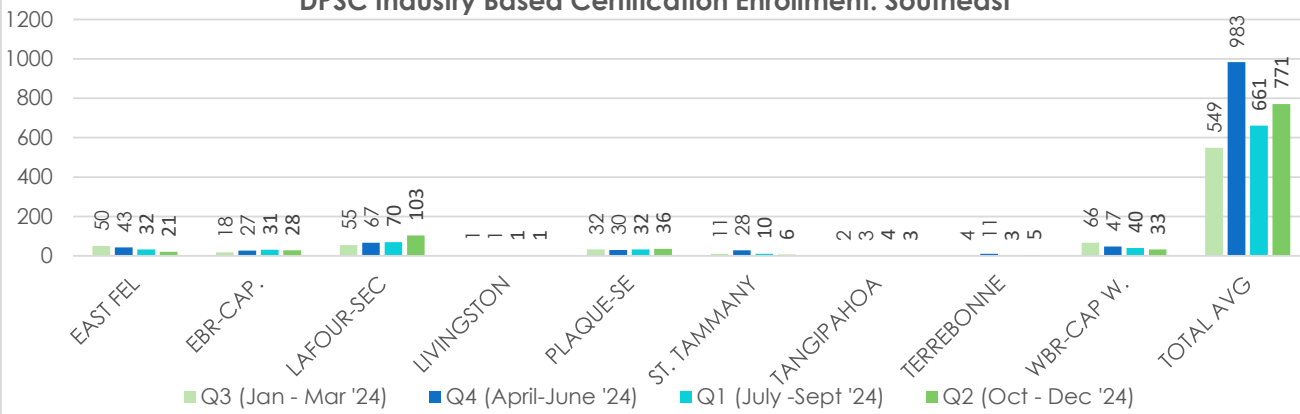
DPSC Industry Based Certification Enrollment: North



DPSC Industry Based Certification Enrollment: Central/Southwest

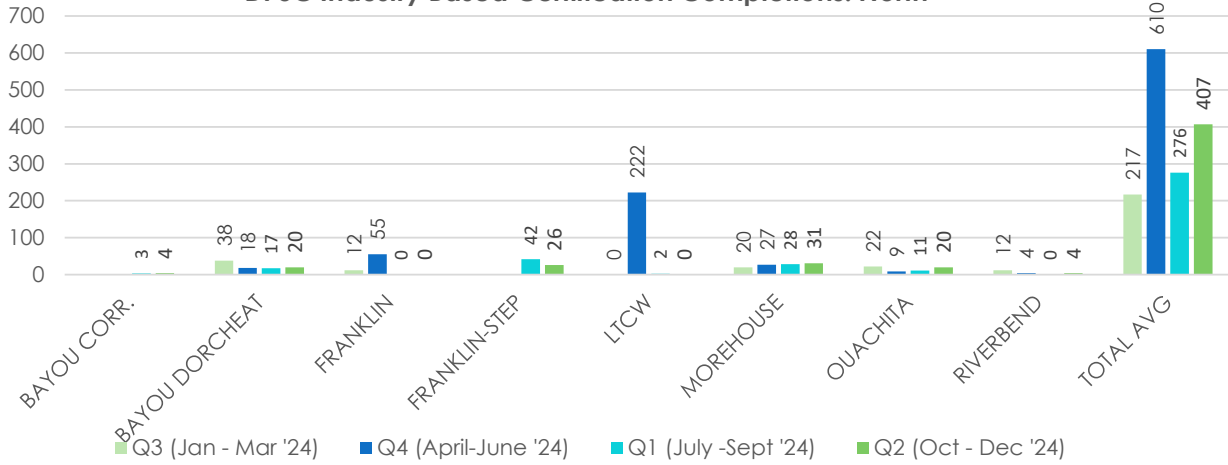


DPSC Industry Based Certification Enrollment: Southeast

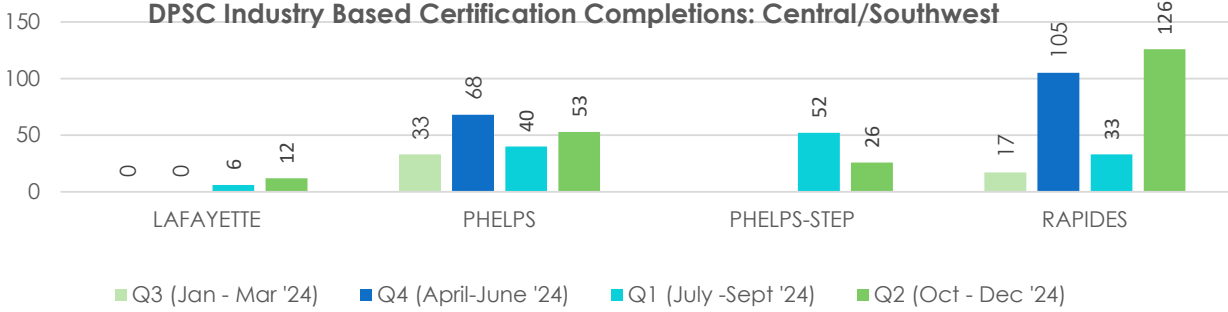


Local Facility Education Programs, Cont. Industry Based Certification Programs

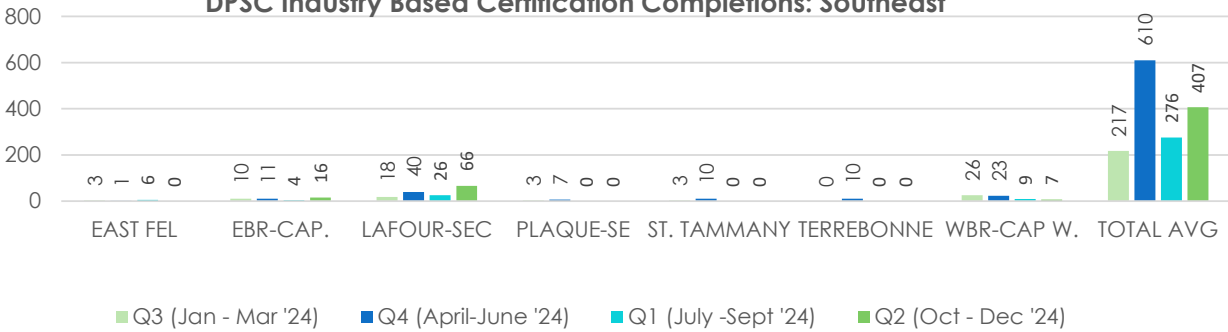
DPSC Industry Based Certification Completions: North



DPSC Industry Based Certification Completions: Central/Southwest



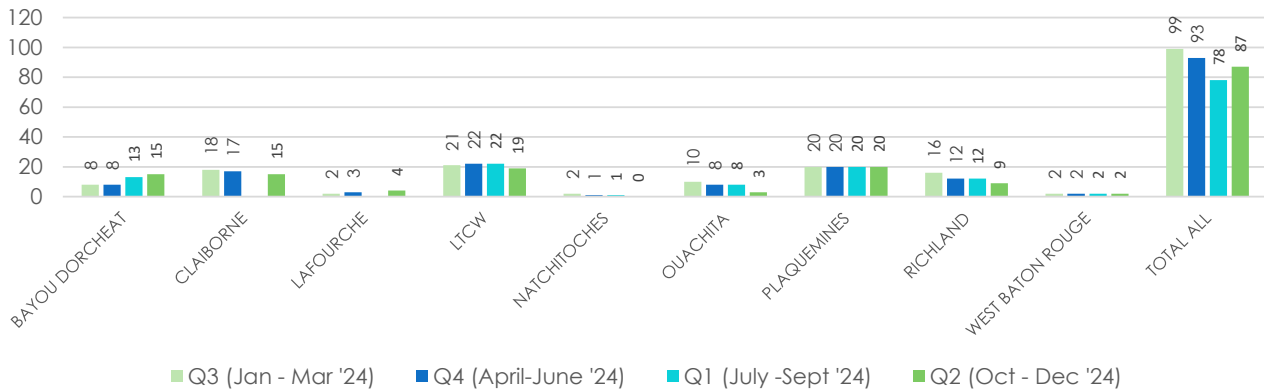
DPSC Industry Based Certification Completions: Southeast



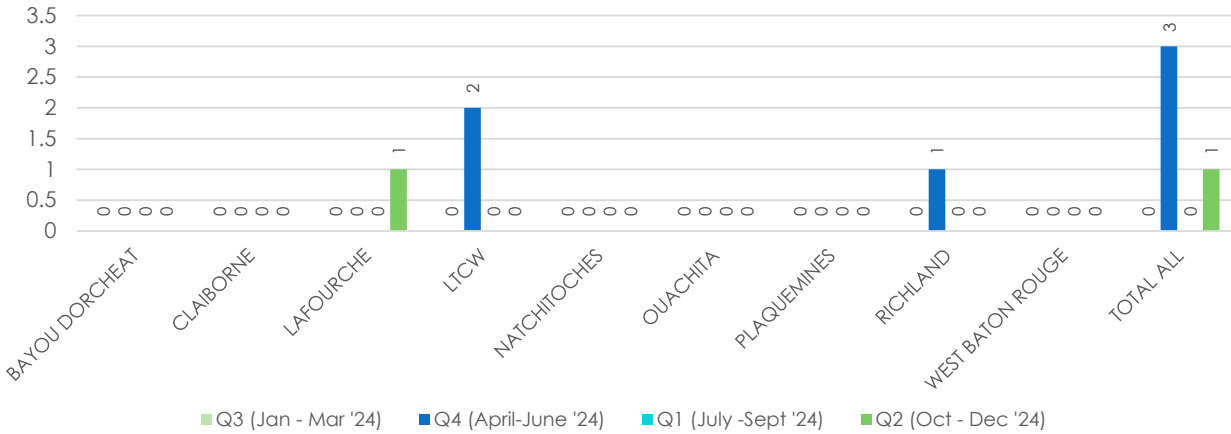
Local Facility Education Programs, Cont.

Pell Funded Education Program - Ashland

ENROLLMENT IN ASHLAND UNIVERSITY



ASHLAND UNIVERSITY ASSOCIATES DEGREES



ASHLAND UNIVERSITY BACHELOR DEGREES

